



Second Nature

The Climate Leadership Commitments: Resilience and Indicators

Ruby Woodside

CT Alliance for Campus Sustainability
Resilience Roundtable
June 2016

Climate Leadership Commitments





Resilience Commitment

Broad Goal: Increase “ability to survive disruption and to anticipate, adapt, and flourish in the face of change” (definition of resilience)

Key concepts of Resilience Commitment

- *Increasing adaptive capacity, and better adapted infrastructure, environment and citizenry*
- *Partnership with community*
- *Assessment and understanding, planning, indicators of success*



Campus / Community Task Force

1

Resilience
Assessment

2

Future Scenarios

3

Climate Impacts &
Vulnerability Assessment

4

Decision Options &
Actions



Campus / Community Task Force

Resilience
Assessment

Benchmarking the Campus:

- Characteristics/unique
- Capacity
- Gaps/vulnerabilities
- Existing climate problems

Future Scenarios

Benchmarking the Community:

- Characteristics/unique
- Capacity
- Gaps/vulnerabilities
- Existing climate problems

Climate Impacts &
Vulnerability Assessment

Between Campus and Community:

- Assessing overlaps,
consistent gaps

Decision Options &
Actions



Campus / Community Task Force

Campus Preferred Pathways:

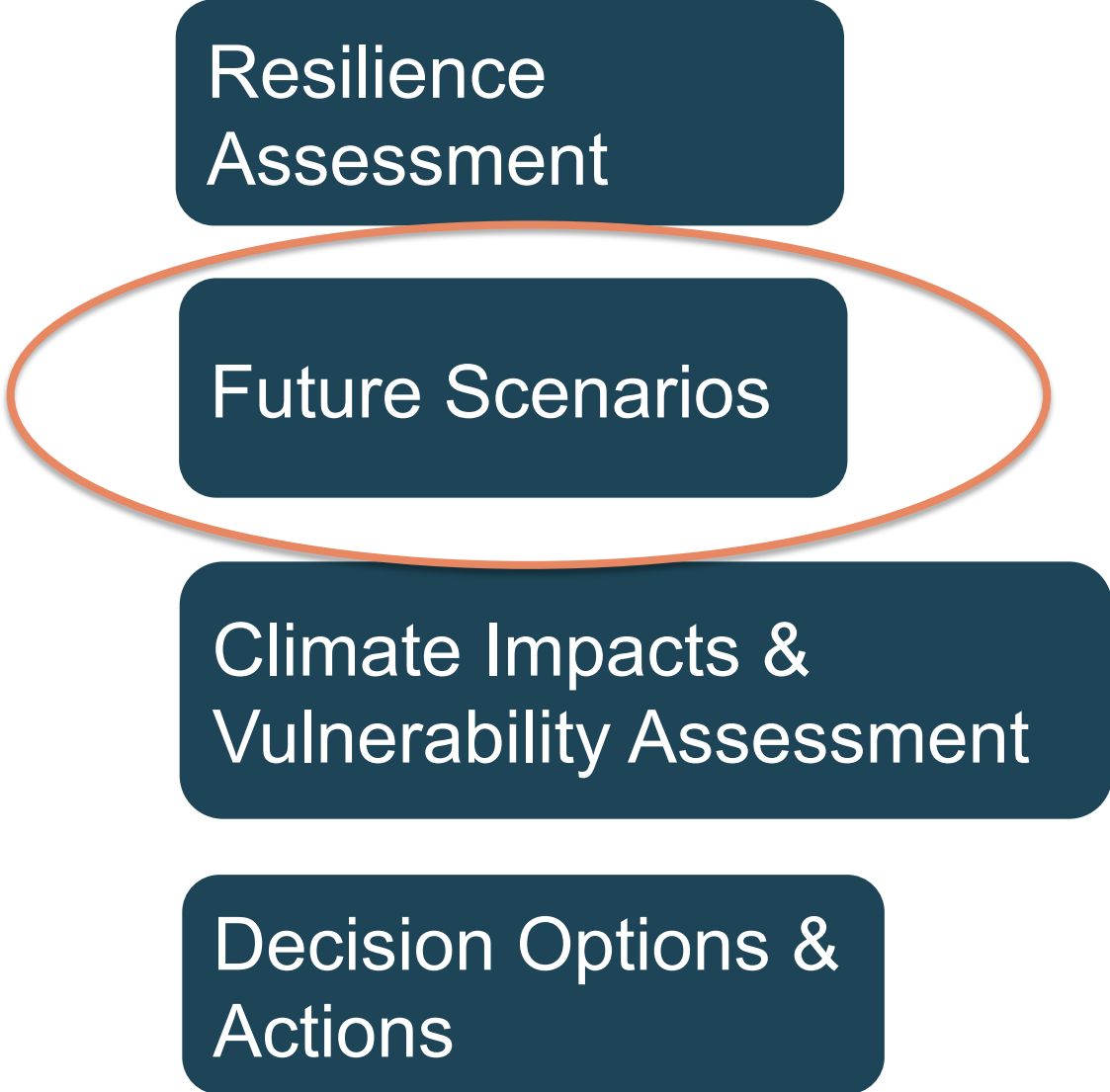
- Priorities and goals
- Outcomes
- Timeframe

Community Preferred Pathways:

- Priorities and goals
- Outcomes
- Timeframe

Between Campus and Community:

- Assessing overlaps, disconnects





Campus / Community Task Force

Changes on Campus:

- Expected climate changes
- Impact to the scenario pathways
- Changes in vulnerability

Changes in the Community:

- Expected climate changes
- Impact to the scenario pathways
- Changes in vulnerability

Between Campus and Community:

- Climate should be the same
- Compare and contrast changes to scenario and vulnerability

Resilience
Assessment

Future Scenarios

Climate Impacts &
Vulnerability Assessment

Decision Options &
Actions



Campus / Community Task Force

Resilience Assessment

Future Scenarios

Climate Impacts & Vulnerability Assessment

Decision Options & Actions

Planning on Campus:

- Amend campus sustainability/climate/strategic plan to increase resilience capacity and reduce impact
 - Finalize indicators
 - Set thresholds and goals

Planning in the Community:

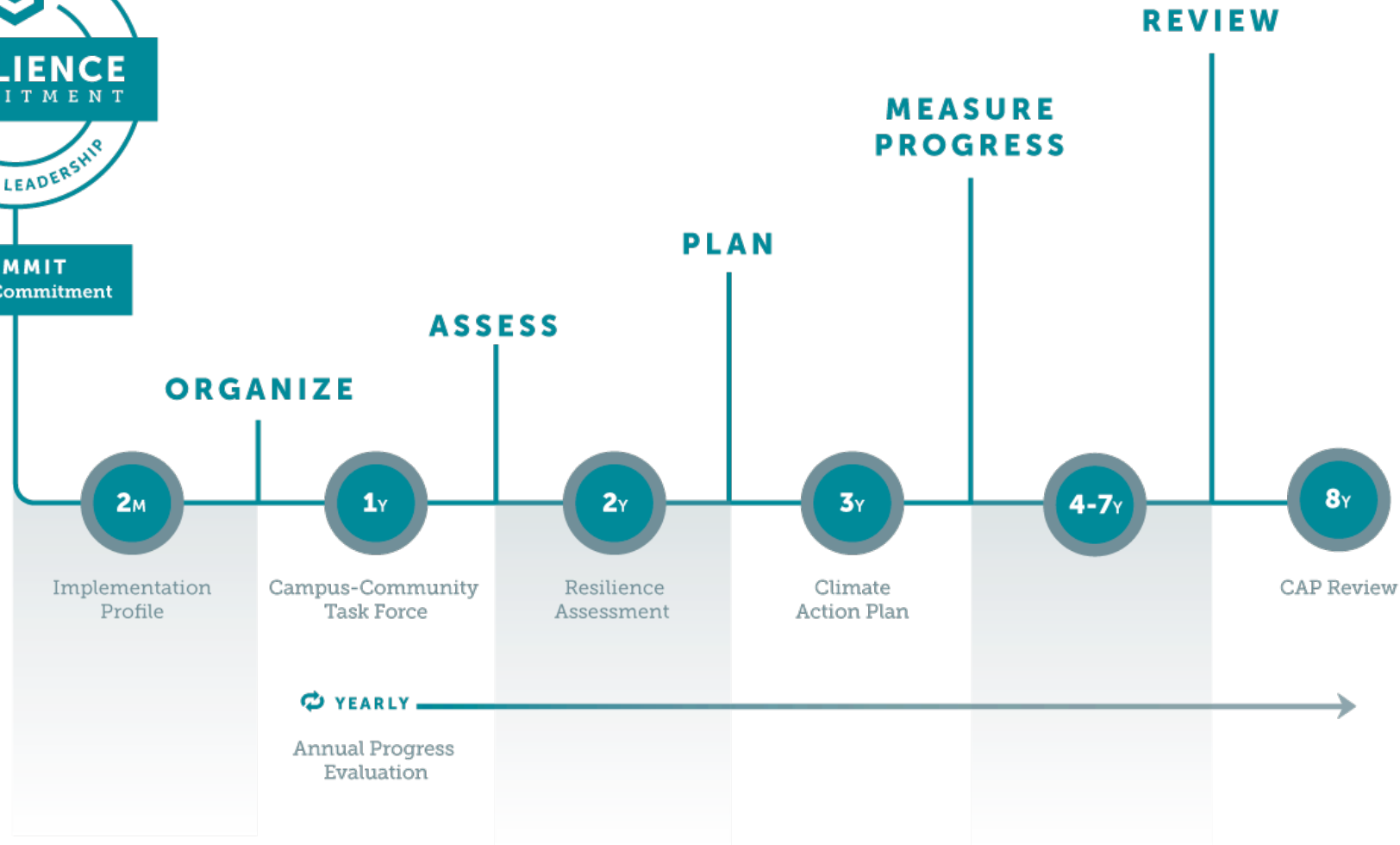
- Amend city sustainability/climate/strategic plan to increase resilience capacity and reduce impact
 - Finalize indicators
 - Set thresholds and goals

Between Campus and Community:

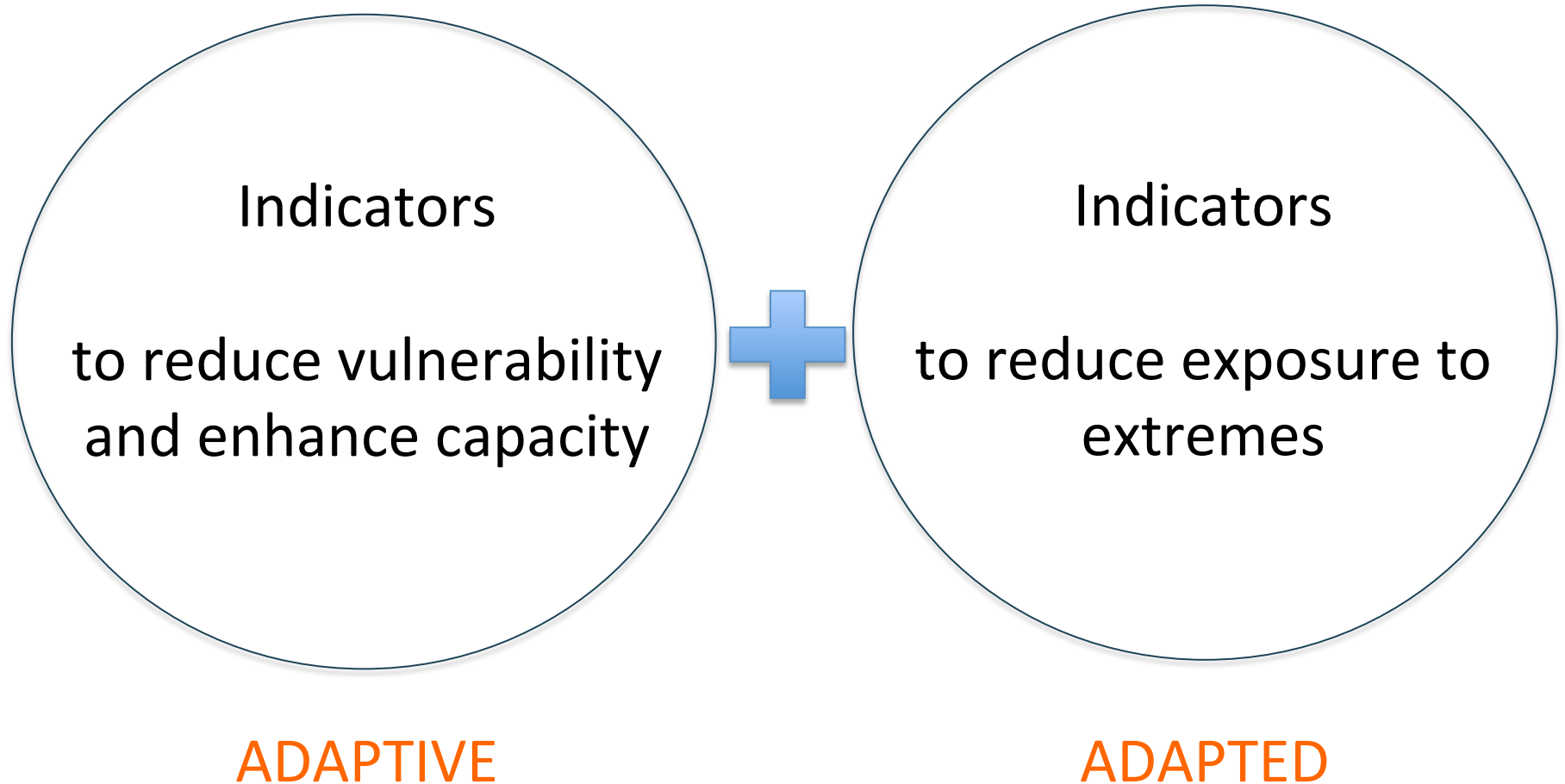
- Identify shared goals
- Identify leverage points to help each reach goals

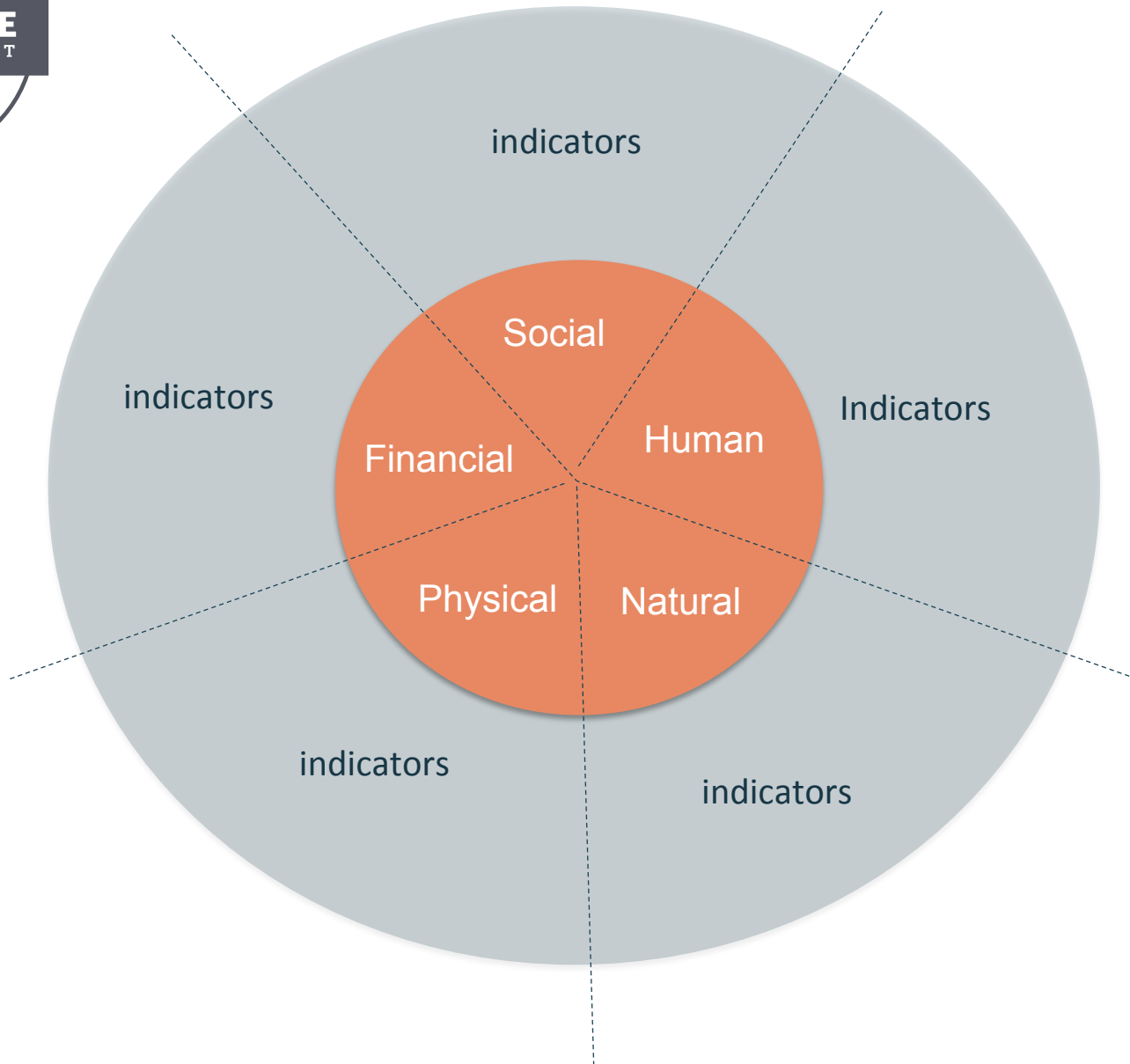


COMMIT
Signed Commitment

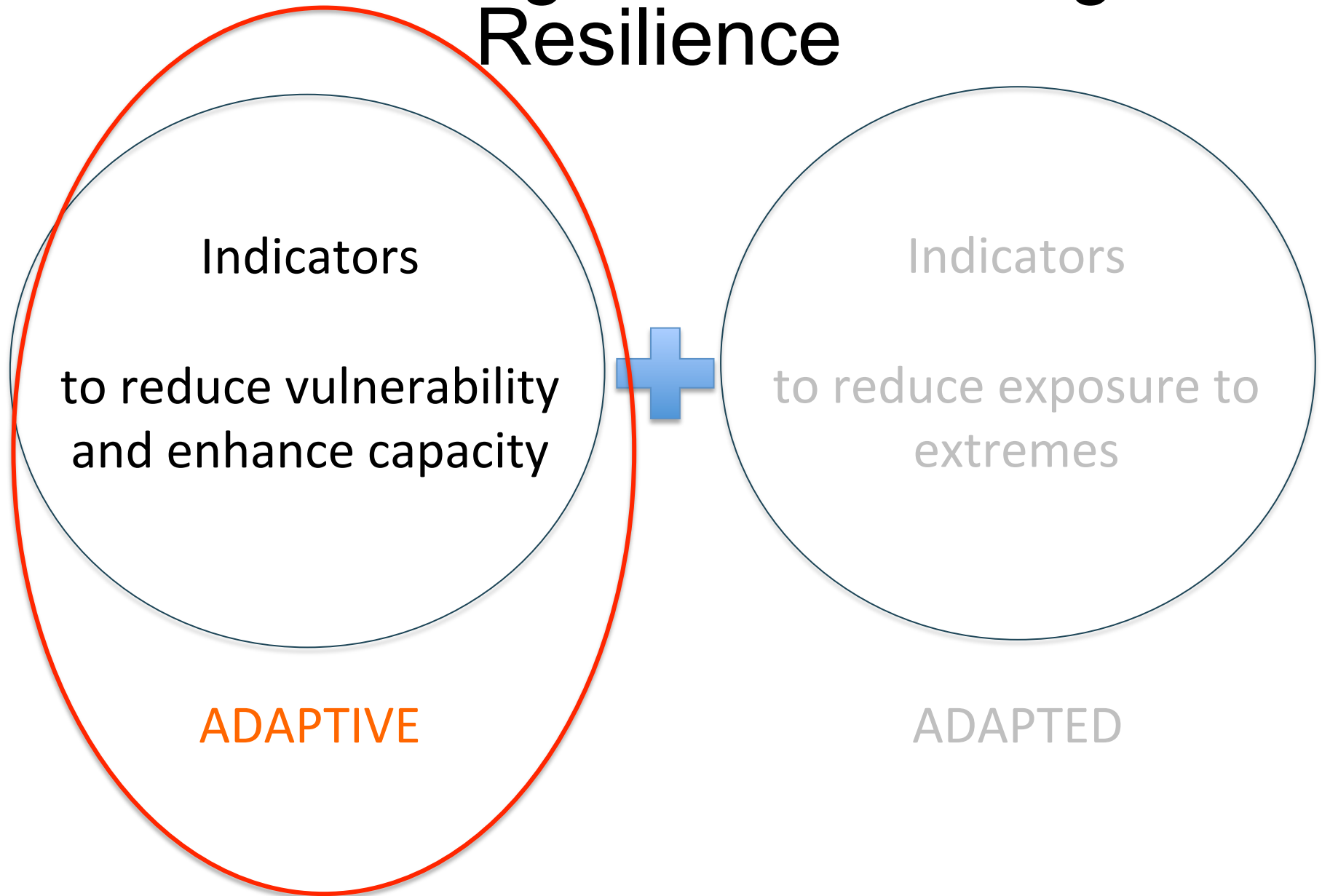


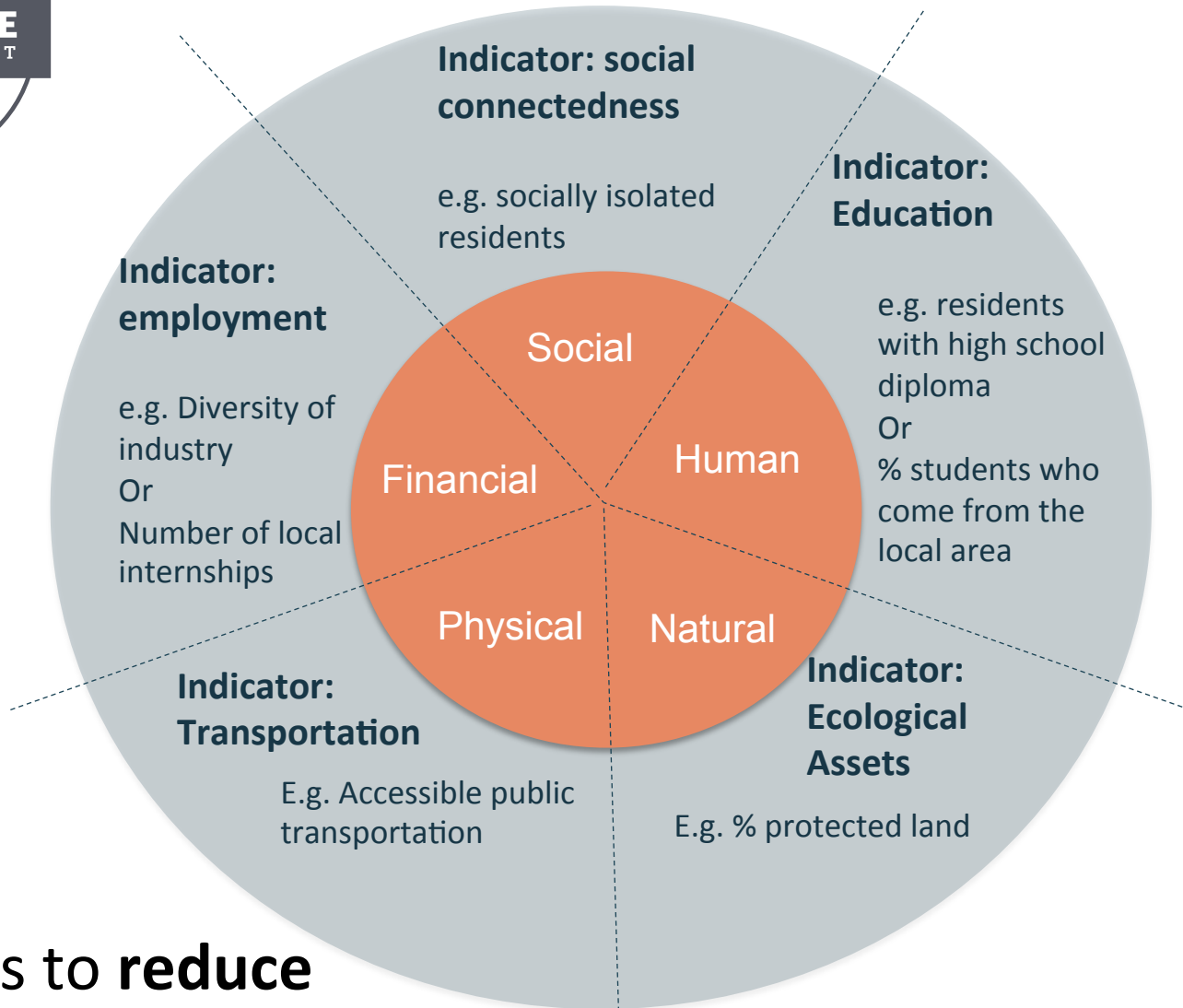
Assessing and Measuring Resilience





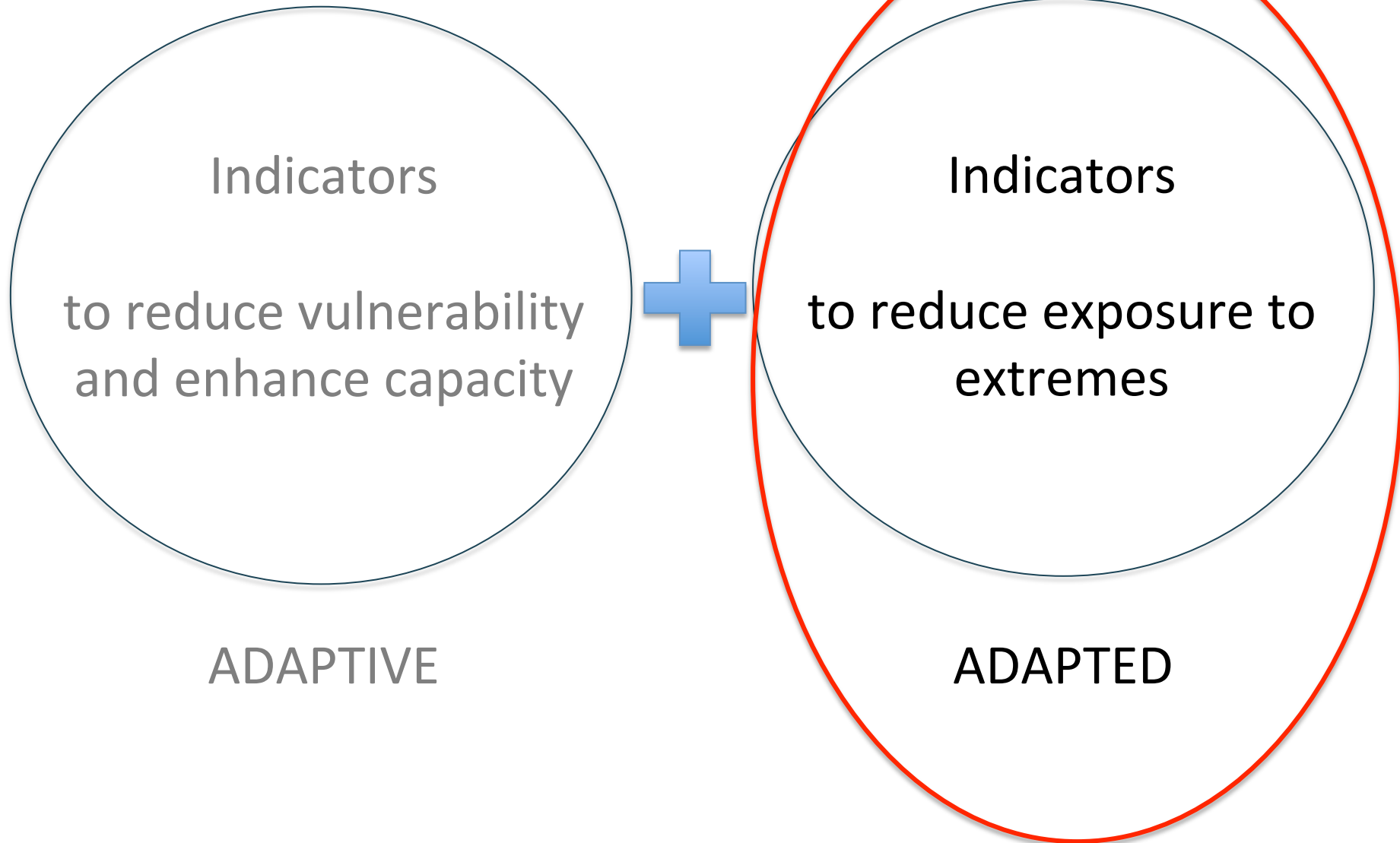
Assessing and Measuring Resilience

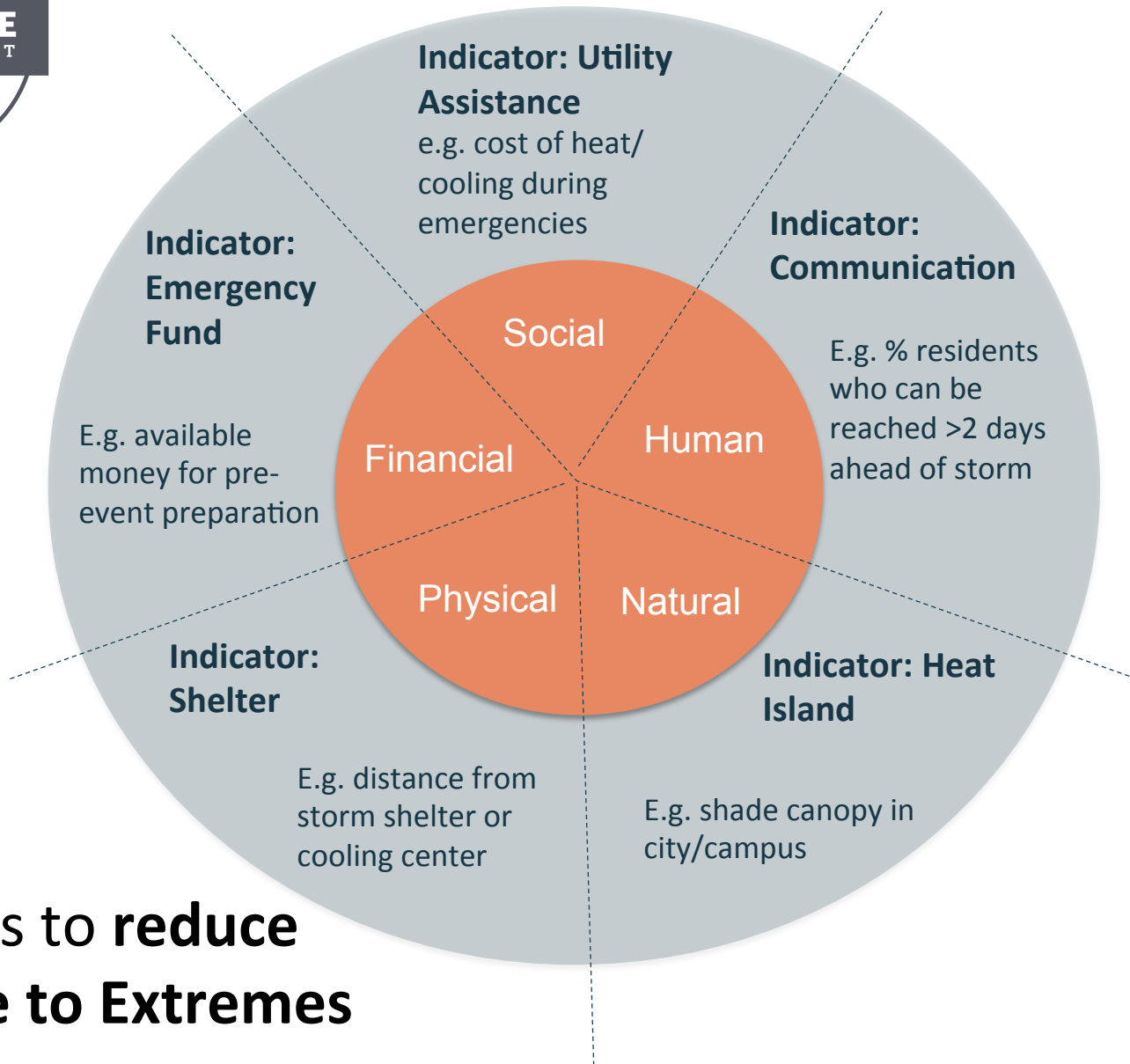




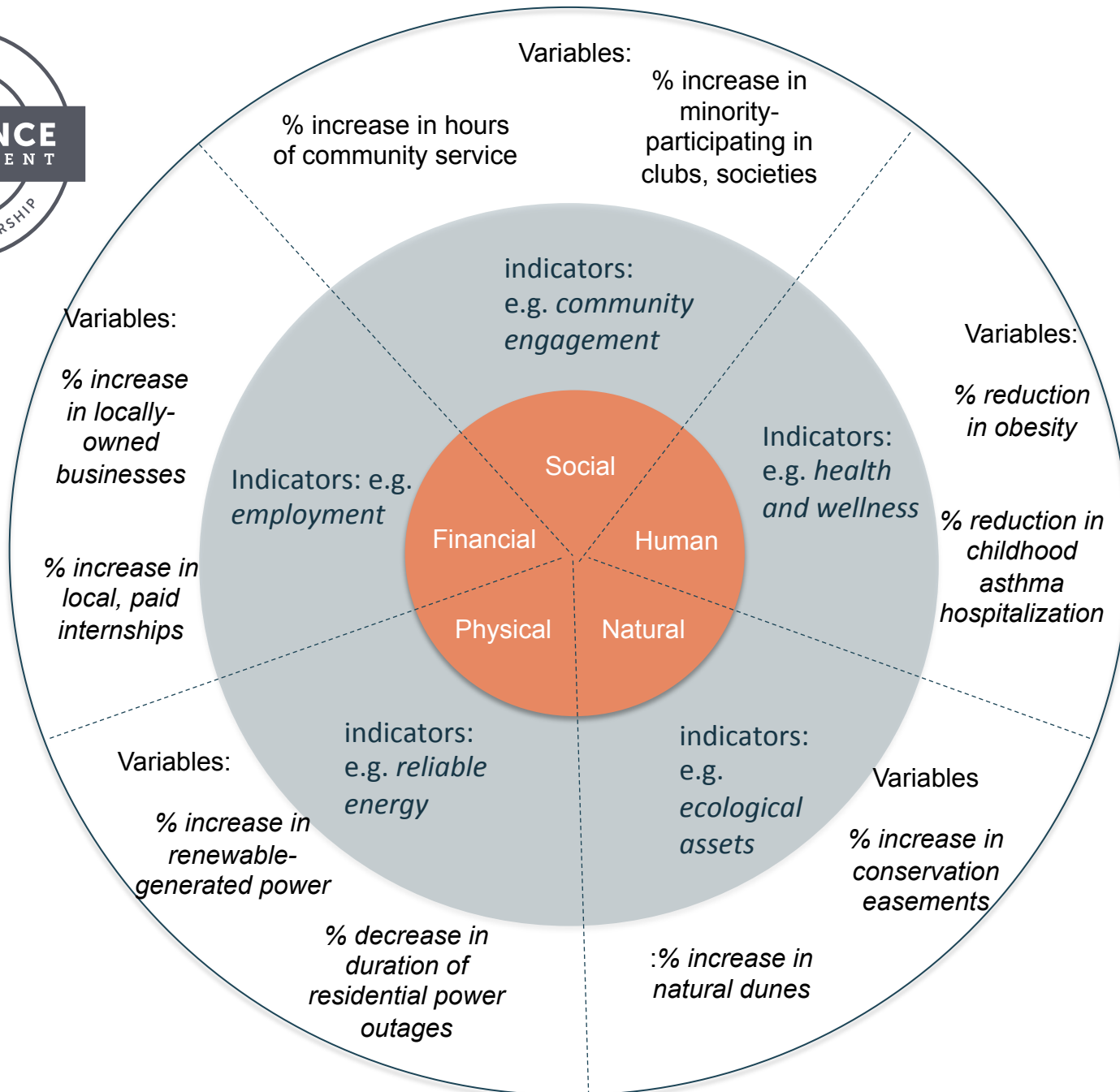
Indicators to **reduce vulnerability** and **enhance capacity**

Assessing and Measuring Resilience





Indicators to **reduce** **Exposure to Extremes**





Climate Leadership Commitment Resources & Opportunities

- On call [Second Nature staff](#) provide guidance on the implementation of the climate commitments, and technical support with reporting requirements
- [Webinars](#), [climate leadership events](#), [publications](#) and [climate and sustainability guide](#) - mostly free and/or at a discount for signatories
- Leadership opportunities for both president's and Implementation Liaison's to serve on the [Climate Leadership Steering Committee](#) or [Implementation Liaison Leadership Circle](#)
- Opportunities to participate [in pilot projects with partner organizations](#) in areas such as scaled renewable energy, and data management and planning
- Access to [Second Nature Reporting System](#) data to help your institution demonstrate it's progress against peers and potentially support funding and financing opportunities for your institution. Data is also available to signatory institution students conducting climate and sustainability research
- Eligibility to participate in the [Climate Leadership Awards](#), an annual competition presented in partnership with the U.S. Green Building Council (USGBC)

<http://secondnature.org/climate-guidance/>

Climate Guidance

These guides provide the tools and direction to help innovative leaders build broader and deeper levels of sustainability impact both on and off campuses.