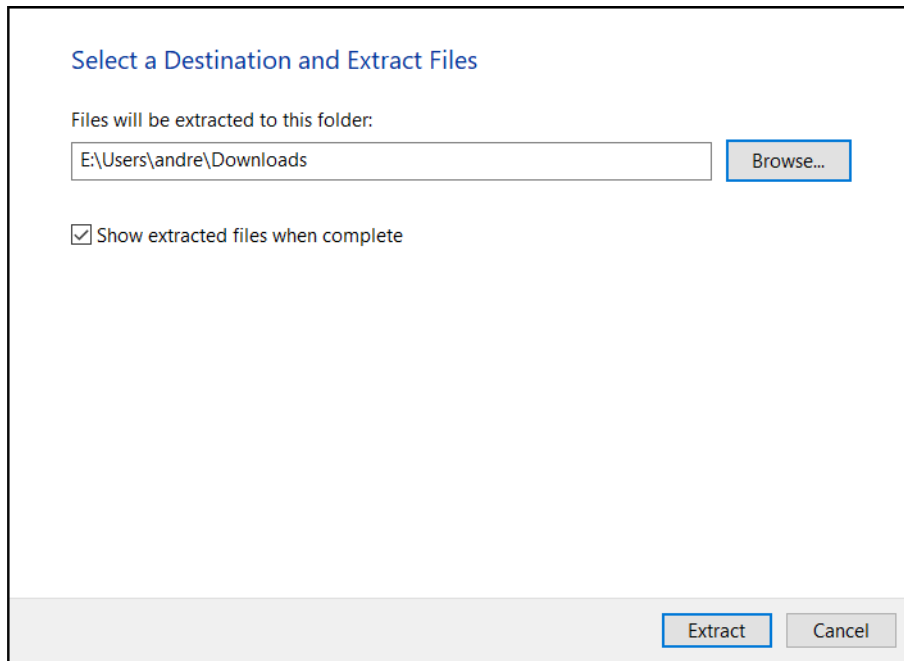


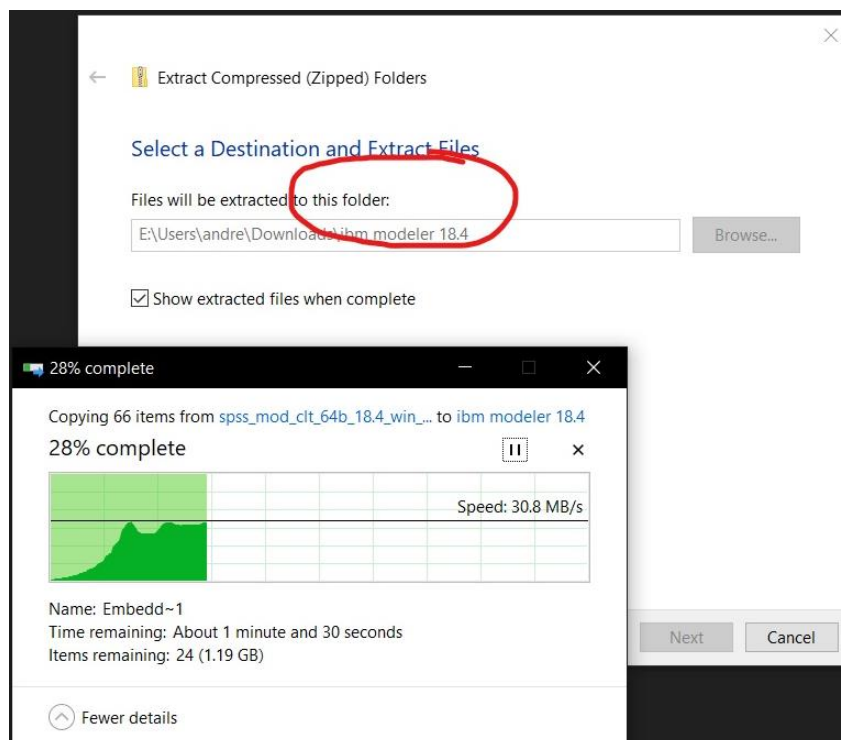
## IBM Modeler 18.4 Installation Steps

Step 1: After the IBM Modeler .zip file is downloaded to your PC or Mac, right click .zip file and click **Extract all**.

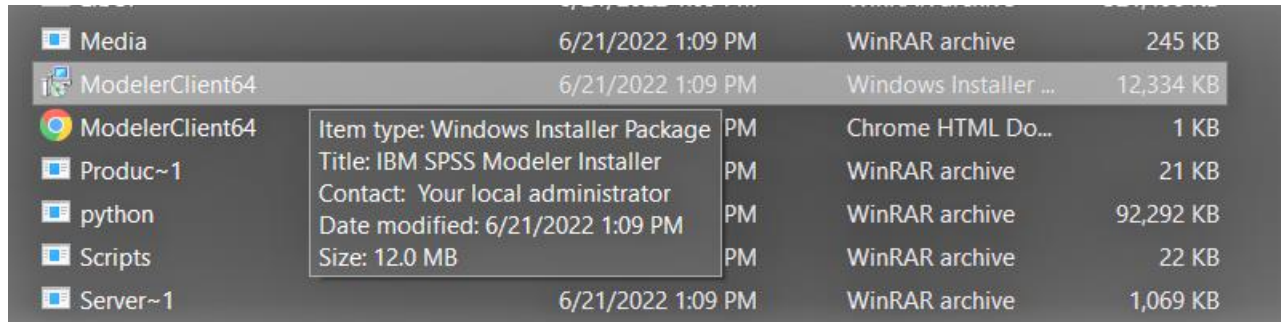
Step 2: Click **Browse** to specify the folder you would like to extract the files to (tip: create separate folder for the IBM Modeler)



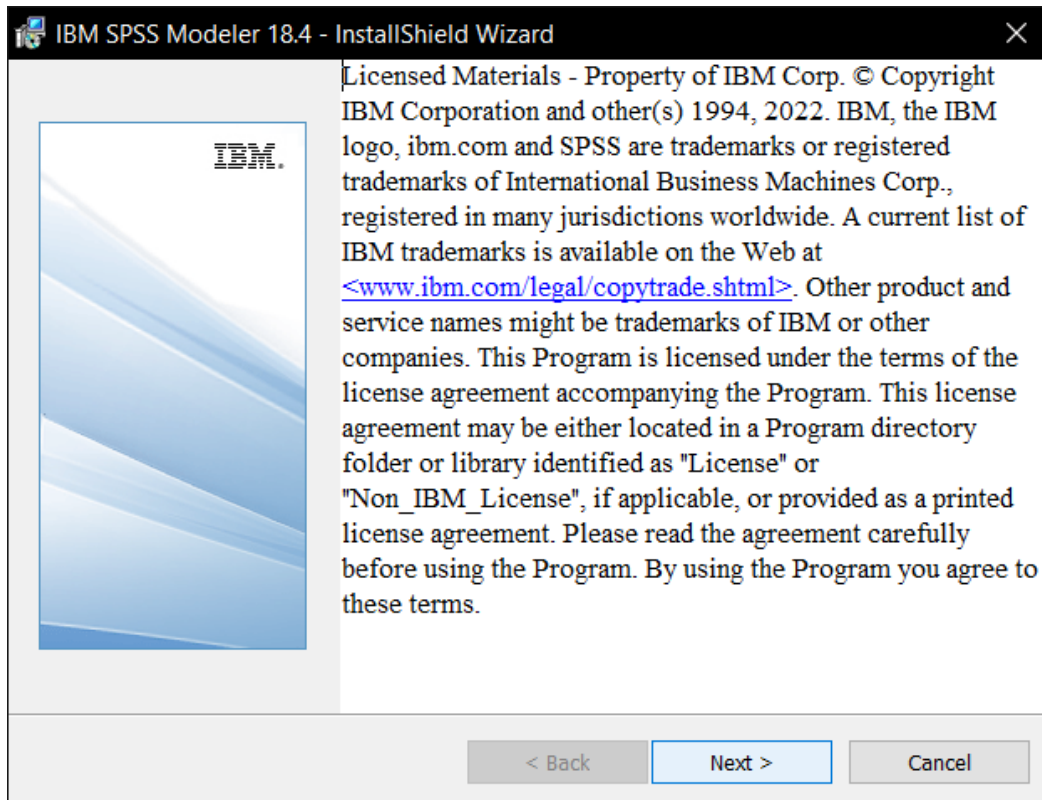
Step 3: click **Extract** and wait for IBM Modeler file to extract to file directory (red circle is supposed to show the folder I made to extract to, markup image saved weird)



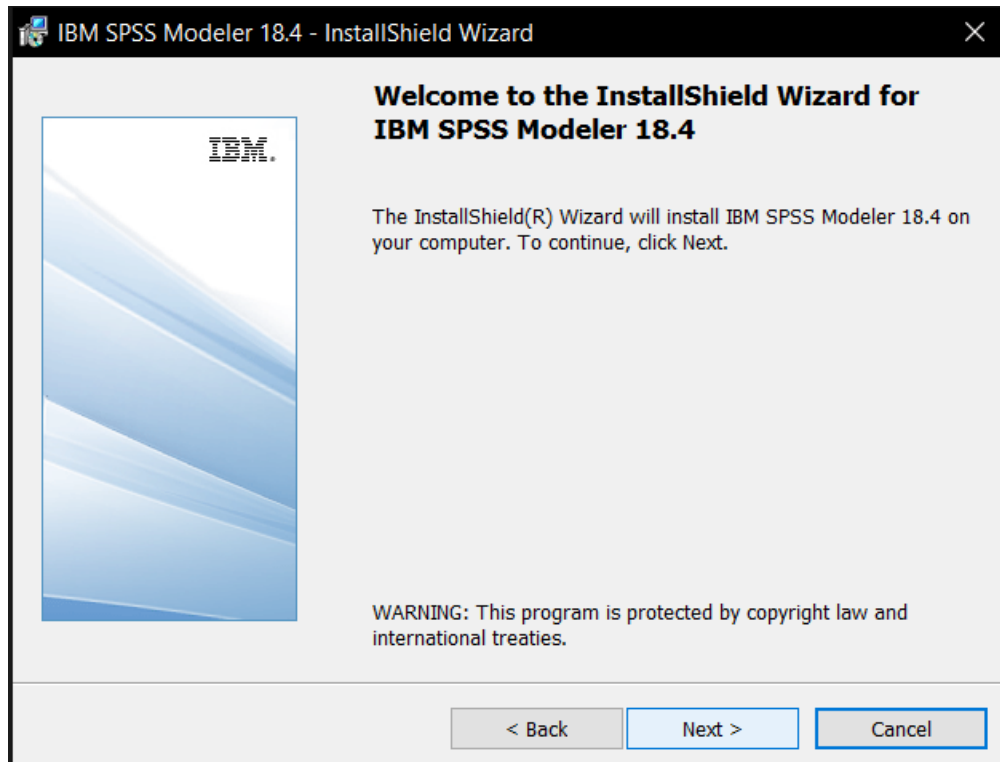
Step 4: Enter the file directory that you extracted the zipped IBM Modeler folder to. There will be a lot of files but locate the file named **ModelerClient64**.



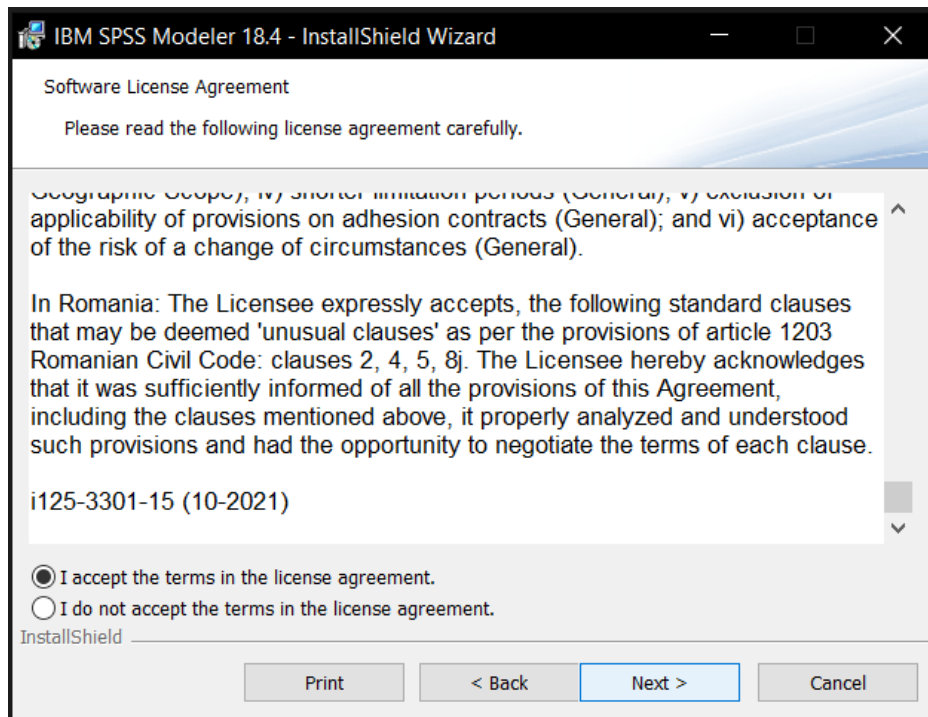
Step 5: Double click **ModelerClient64** and you should get a pop-up like the one below, click **Next**.



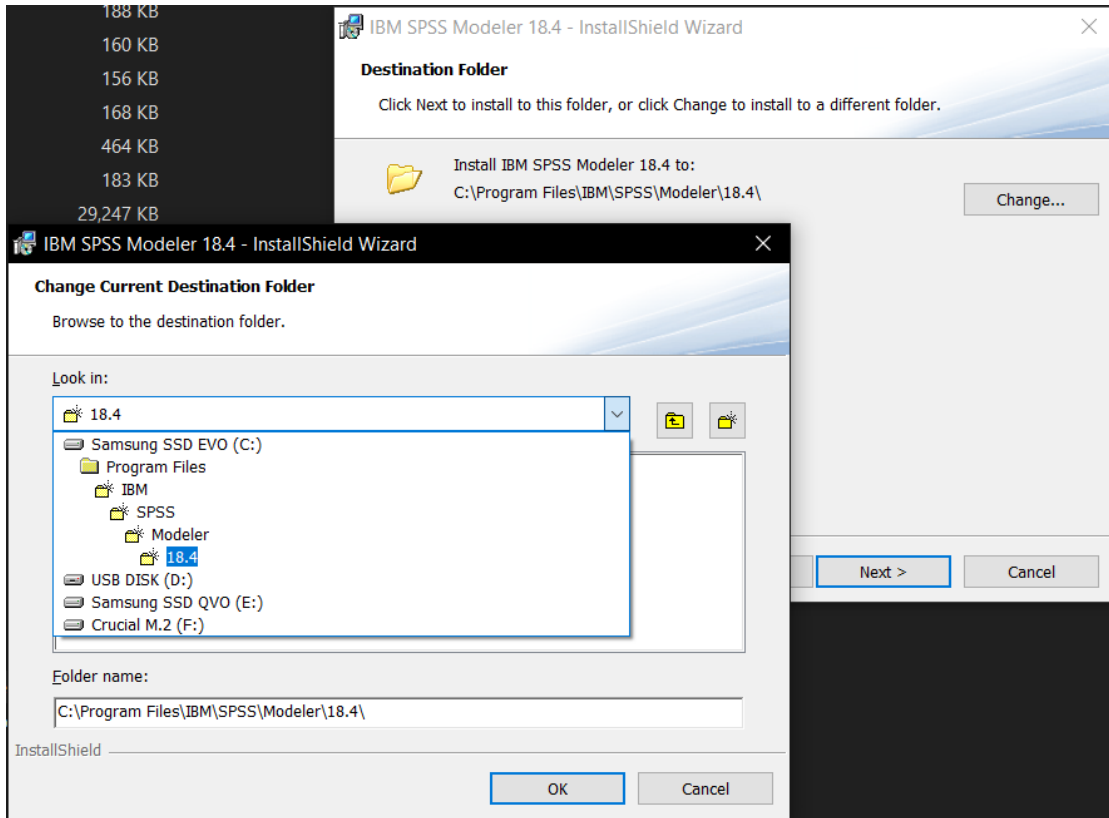
Step 6: Click **Next** again to begin the installer wizard.



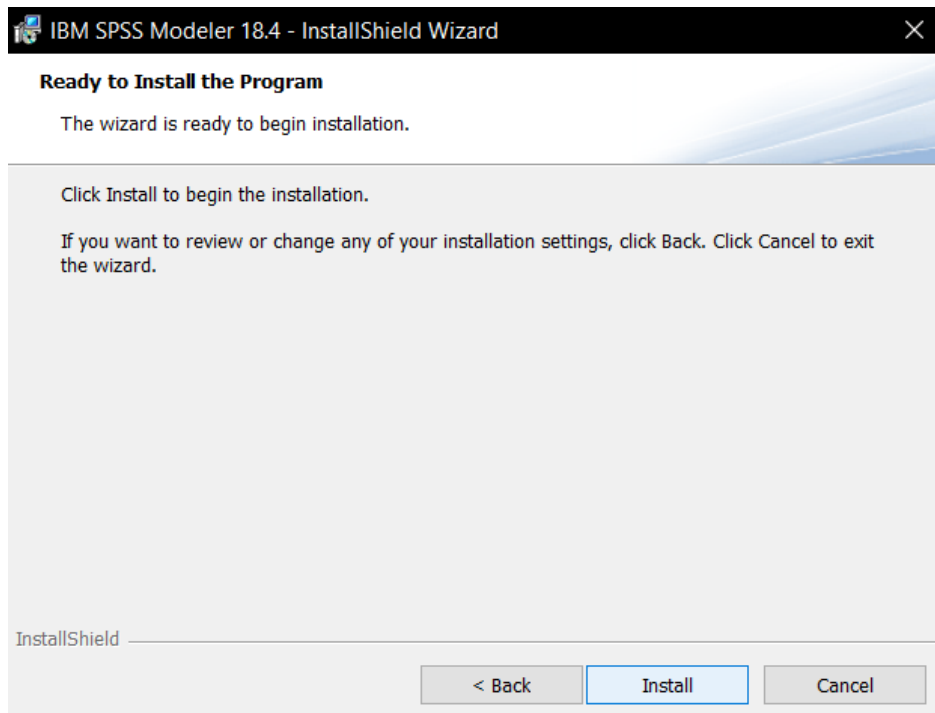
Step 7: Read and accept terms in license agreement (It's important you don't this software for commercial use!) then click **Next**.



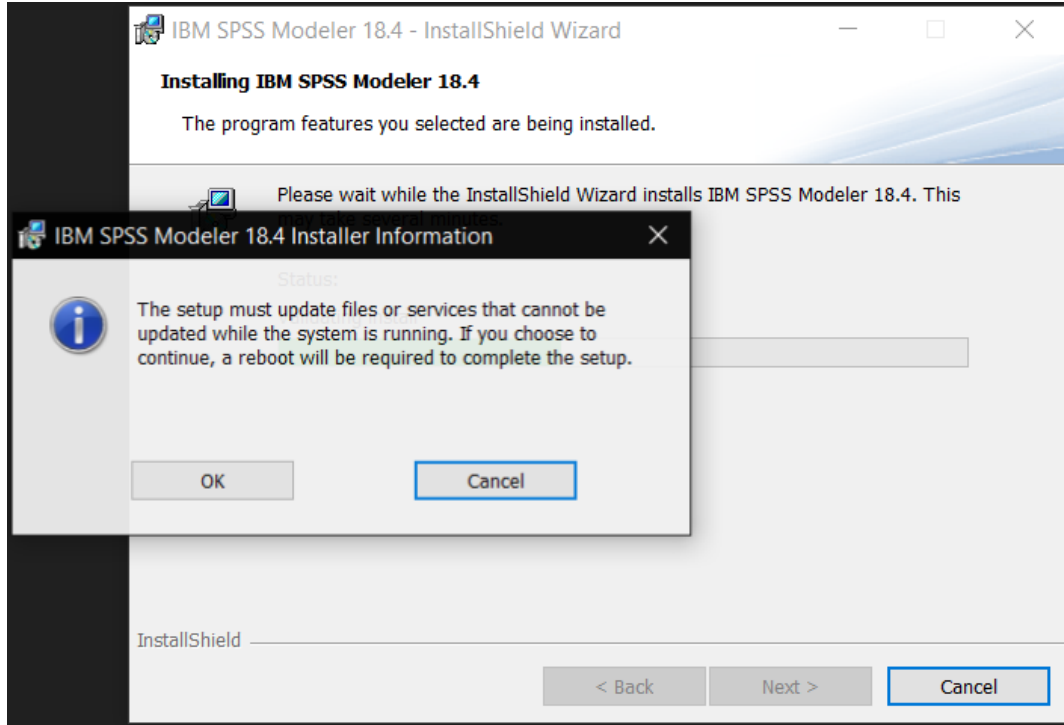
Step 8: Click **Next** to install the IBM Modeler to the folder it automatically creates or click **Change** to install it somewhere else.



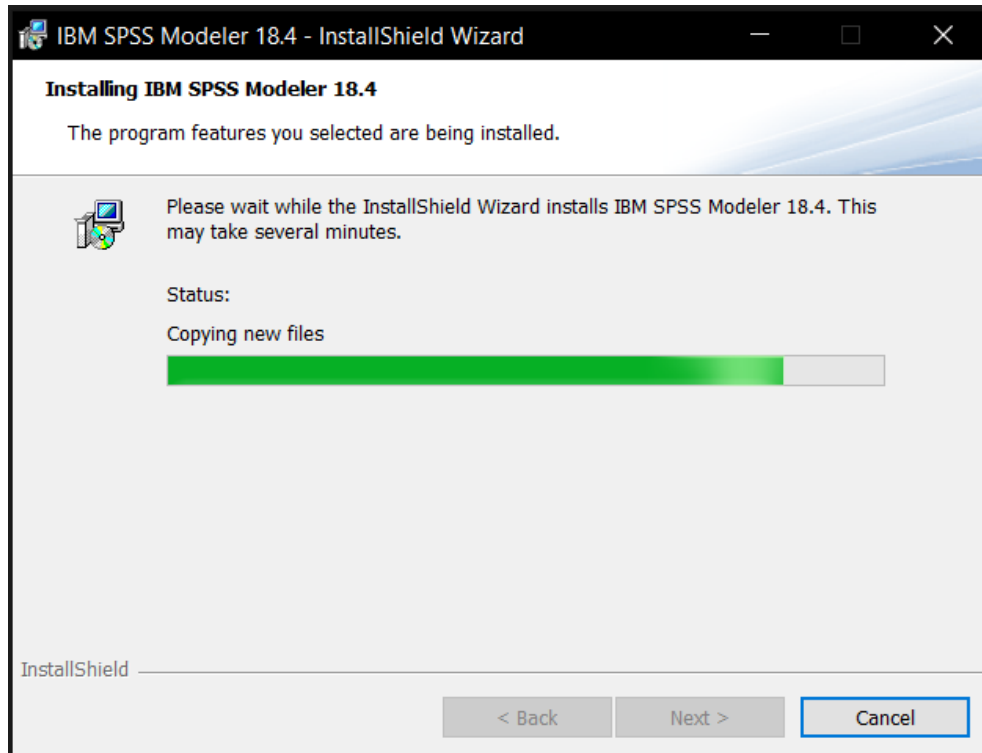
Step 9: You are ready to begin installing the IBM Modeler. Click **Install**.



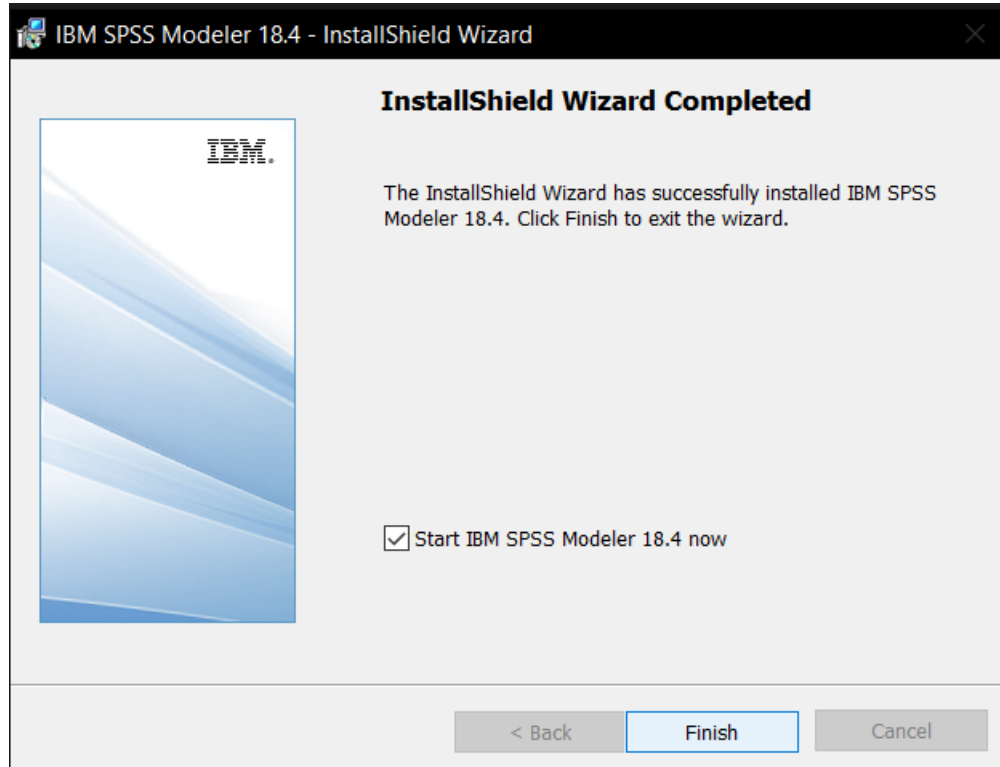
Step 10: After clicking **Install**, you will get a reboot warning, click **OK**. You will have to restart your PC at the **end** of this process.



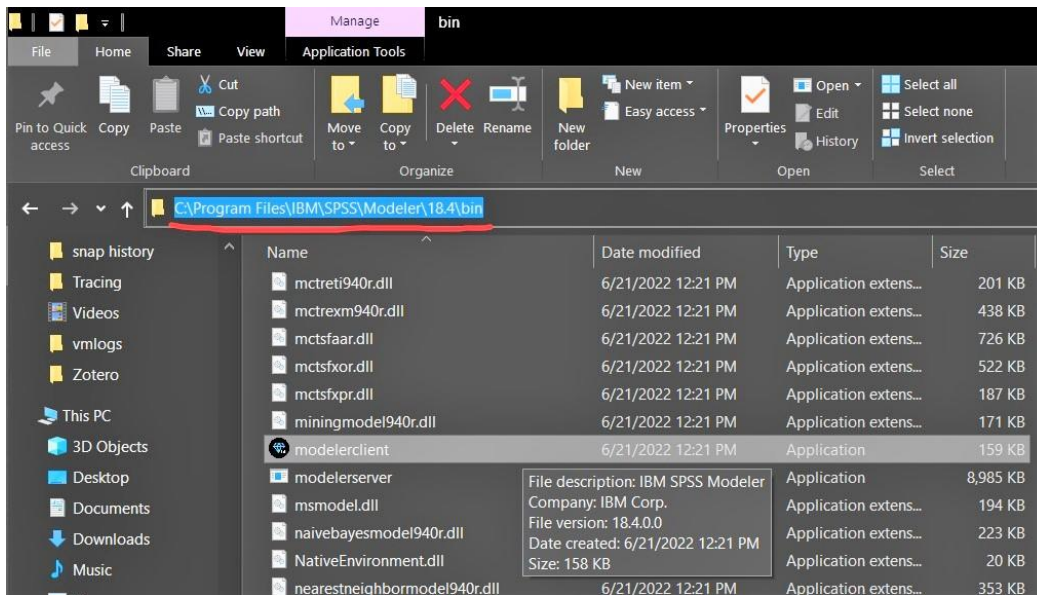
Step 11: Wait for IBM Modeler to install.



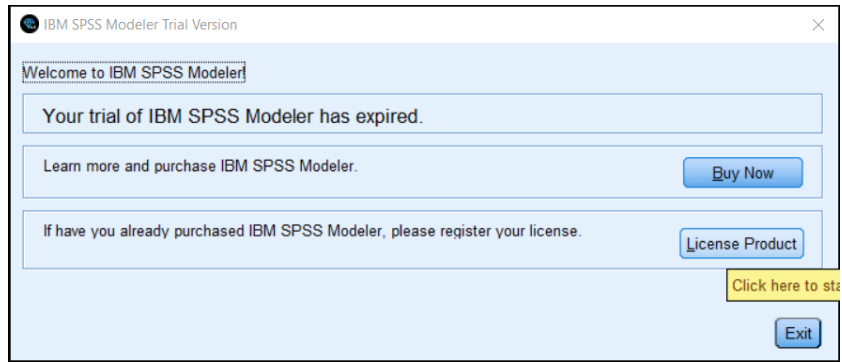
Step 12: After IBM Modeler is finished downloading, click **Finish**.



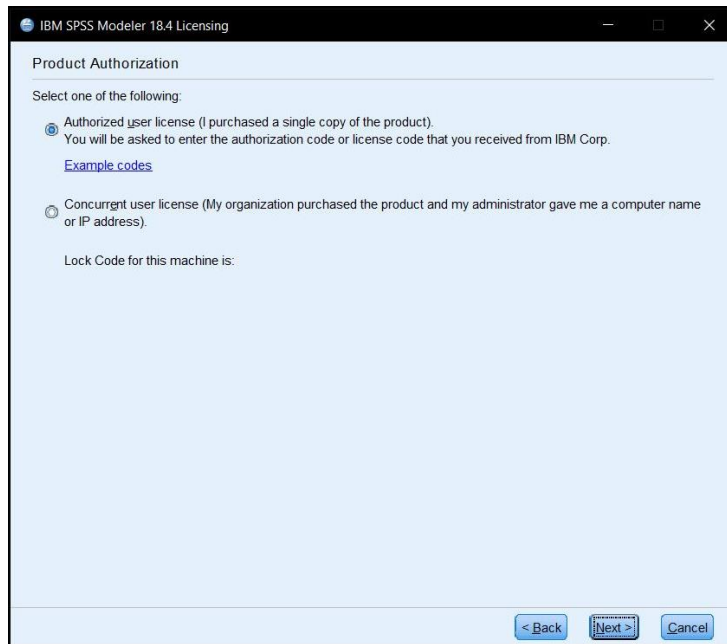
Step 13: You should be able to type “IBM” in your Start Menu Search bar, and a shortcut to the application should pop up. Alternatively, you can enter the folder you installed the IBM Modeler 18.4 files to and enter the “bin” folder and click **modelerclient**.



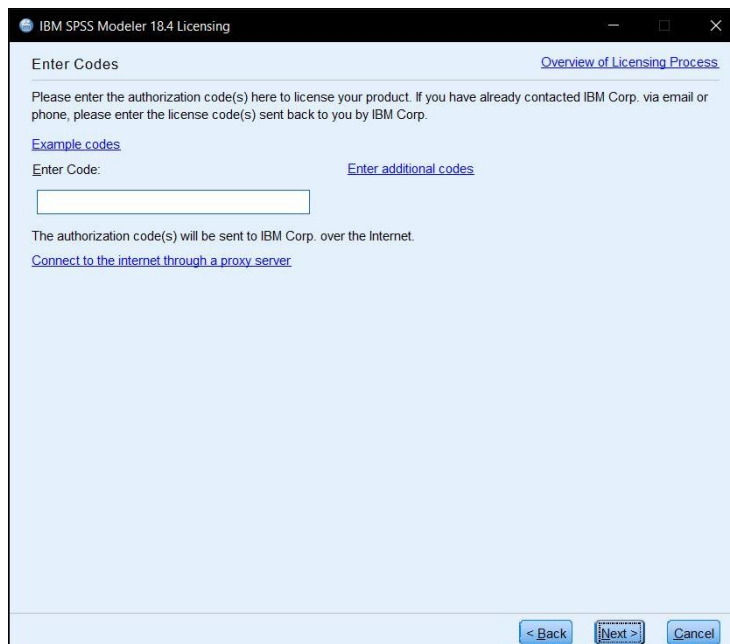
Step 14: Open the application and a pop-up like the one below should appear on screen. Click **License Product**.



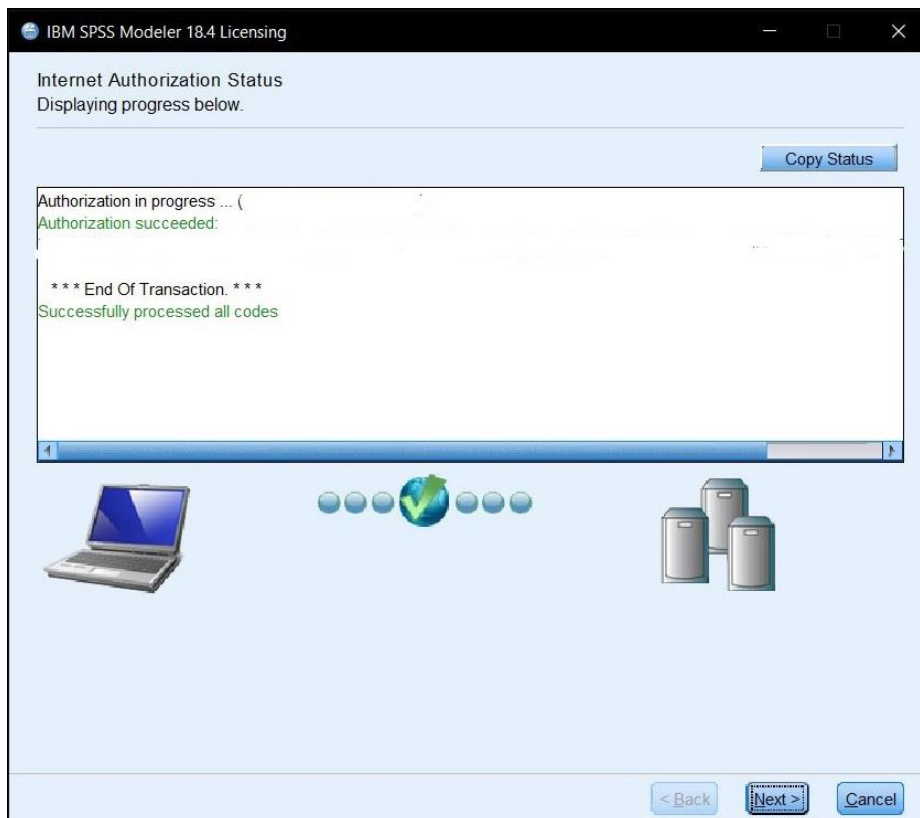
Step 15: Select "Authorized user license" and click **Next**.



Step 16: Enter the product code Citurs gave you, then click **Next**.



Step 17: Wait for IBM to authorize your code for the Modeler, click **Next**.



Step 18: You're all set! Click **Finish**. You will need to restart your PC to complete this setup. After rebooting, you will be able to use the IBM Modeler 18.4 on your personal computer!

