

SQL Server Dev Edition Install

Website link:

<https://www.microsoft.com/en-us/sql-server/sql-server-downloads>

Helpful Video:

<https://www.youtube.com/watch?v=WdvTb7YKi6Y>

Or, download a free specialized edition



Developer

SQL Server 2022 Developer is a full-featured free edition, licensed for use as a development and test database in a non-production environment.

[Download now](#)

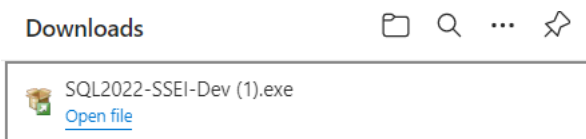


Express

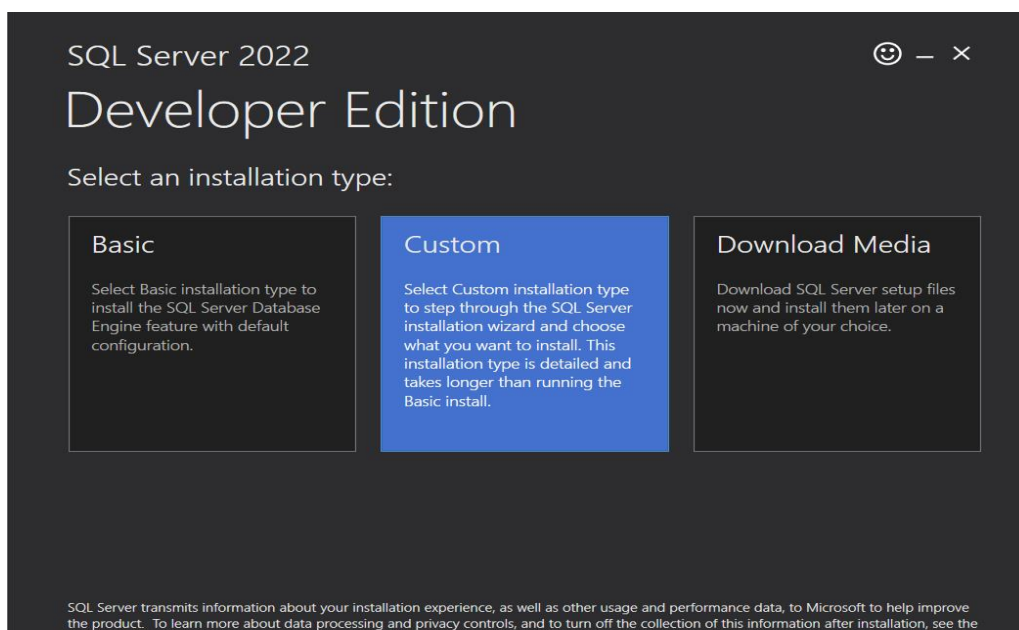
SQL Server 2022 Express is a free edition of SQL Server, ideal for development and production for desktop, web, and small server applications.

[Download now](#)

Download now then open .exe file



.exe file will take you to install screen click “Custom Install”, Choose Custom Installation Type, Confirm download location and click install



SQL Server 2022
Developer Edition

Select an installation type:

- Basic**
Select Basic installation type to install the SQL Server Database Engine feature with default configuration.
- Custom**
Select Custom installation type to step through the SQL Server installation wizard and choose what you want to install. This installation type is detailed and takes longer than running the Basic install.
- Download Media**
Download SQL Server setup files now and install them later on a machine of your choice.

SQL Server transmits information about your installation experience, as well as other usage and performance data, to Microsoft to help improve the product. To learn more about data processing and privacy controls, and to turn off the collection of this information after installation, see the [documentation](#).

SQL Server 2022




Developer Edition

Specify SQL Server media download target location

MEDIA LOCATION *:

C:\SQL2022

 Browse

MINIMUM FREE SPACE

8494 MB

DOWNLOAD SIZE

1188 MB

Close

< Previous

Install

SQL Server 2022



Developer Edition

Installation has completed successfully!

INSTANCE NAME

MSSQLSERVER02

CONNECTION STRING

Server=localhost\MSSQLSERVER02;Database=master;Trusted_Connection=



SQL ADMINISTRATORS

DESKTOP-5SUL81P\natha

SQL SERVER INSTALL LOG FOLDER

C:\Program Files\Microsoft SQL Server\160\Setup Bootstrap\Log\2023081



FEATURES INSTALLED

SQLENGINE

INSTALLATION MEDIA FOLDER

C:\SQL2022\Developer_ENU




VERSION

16.0.1000.6, RTM

INSTALLATION RESOURCES FOLDER

C:\Program Files\Microsoft SQL Server\160\SSEI\Resources



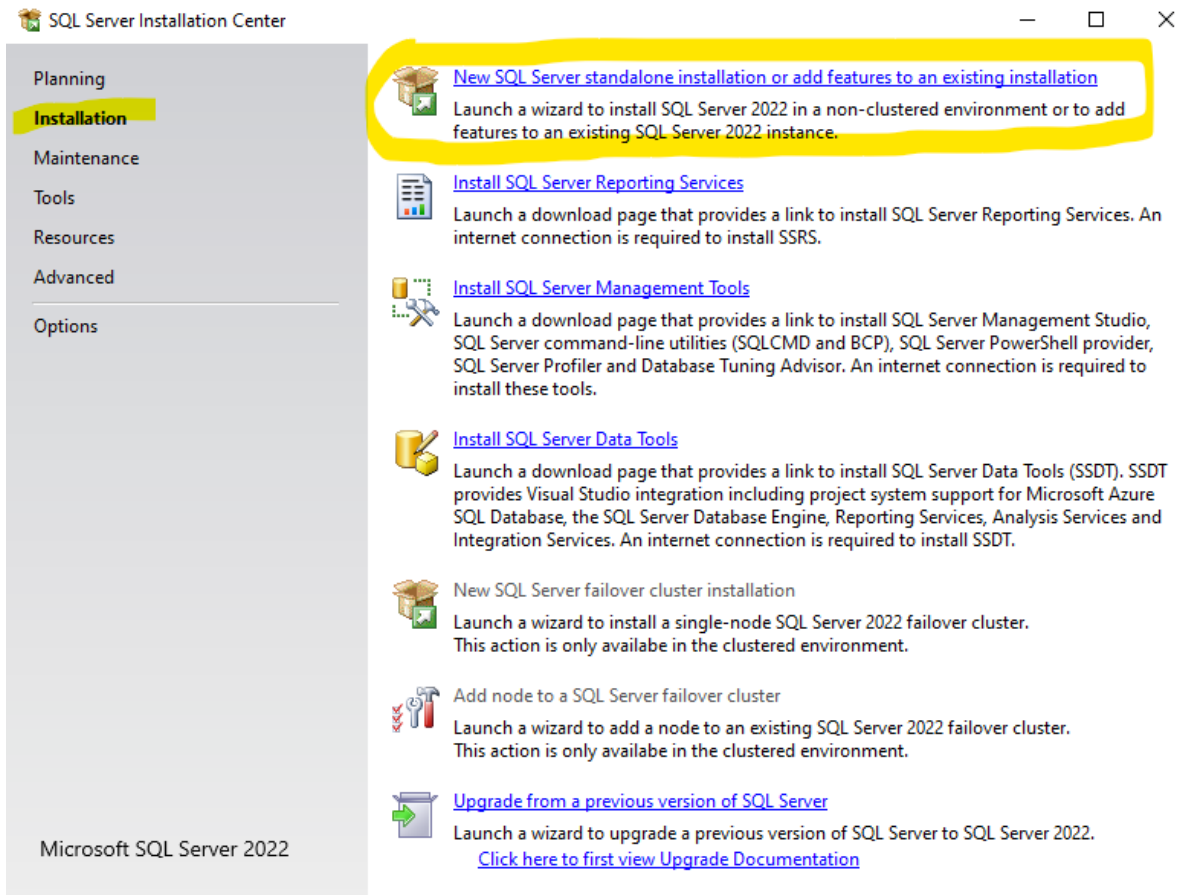
 Connect Now

Customize

Install SSMS

Close

Under installation click “New SQL server standalone installation or add features to an existing installation”



SQL Server Installation Center

Planning

Installation

Maintenance

Tools

Resources

Advanced

Options

Microsoft SQL Server 2022

[New SQL Server standalone installation or add features to an existing installation](#)
Launch a wizard to install SQL Server 2022 in a non-clustered environment or to add features to an existing SQL Server 2022 instance.

[Install SQL Server Reporting Services](#)
Launch a download page that provides a link to install SQL Server Reporting Services. An internet connection is required to install SSRS.

[Install SQL Server Management Tools](#)
Launch a download page that provides a link to install SQL Server Management Studio, SQL Server command-line utilities (SQLCMD and BCP), SQL Server PowerShell provider, SQL Server Profiler and Database Tuning Advisor. An internet connection is required to install these tools.

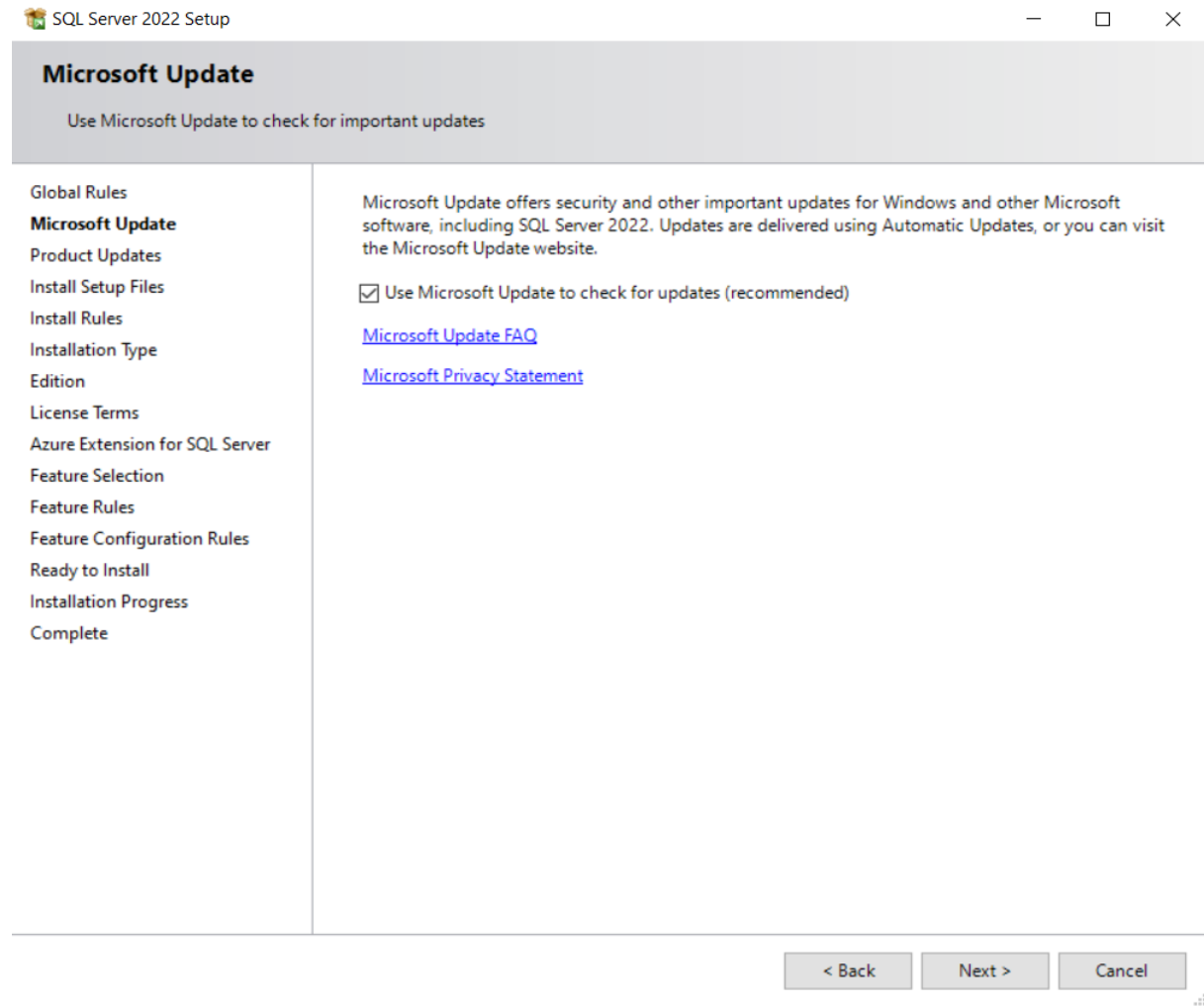
[Install SQL Server Data Tools](#)
Launch a download page that provides a link to install SQL Server Data Tools (SSDT). SSDT provides Visual Studio integration including project system support for Microsoft Azure SQL Database, the SQL Server Database Engine, Reporting Services, Analysis Services and Integration Services. An internet connection is required to install SSDT.

New SQL Server failover cluster installation
Launch a wizard to install a single-node SQL Server 2022 failover cluster. This action is only available in the clustered environment.

Add node to a SQL Server failover cluster
Launch a wizard to add a node to an existing SQL Server 2022 failover cluster. This action is only available in the clustered environment.

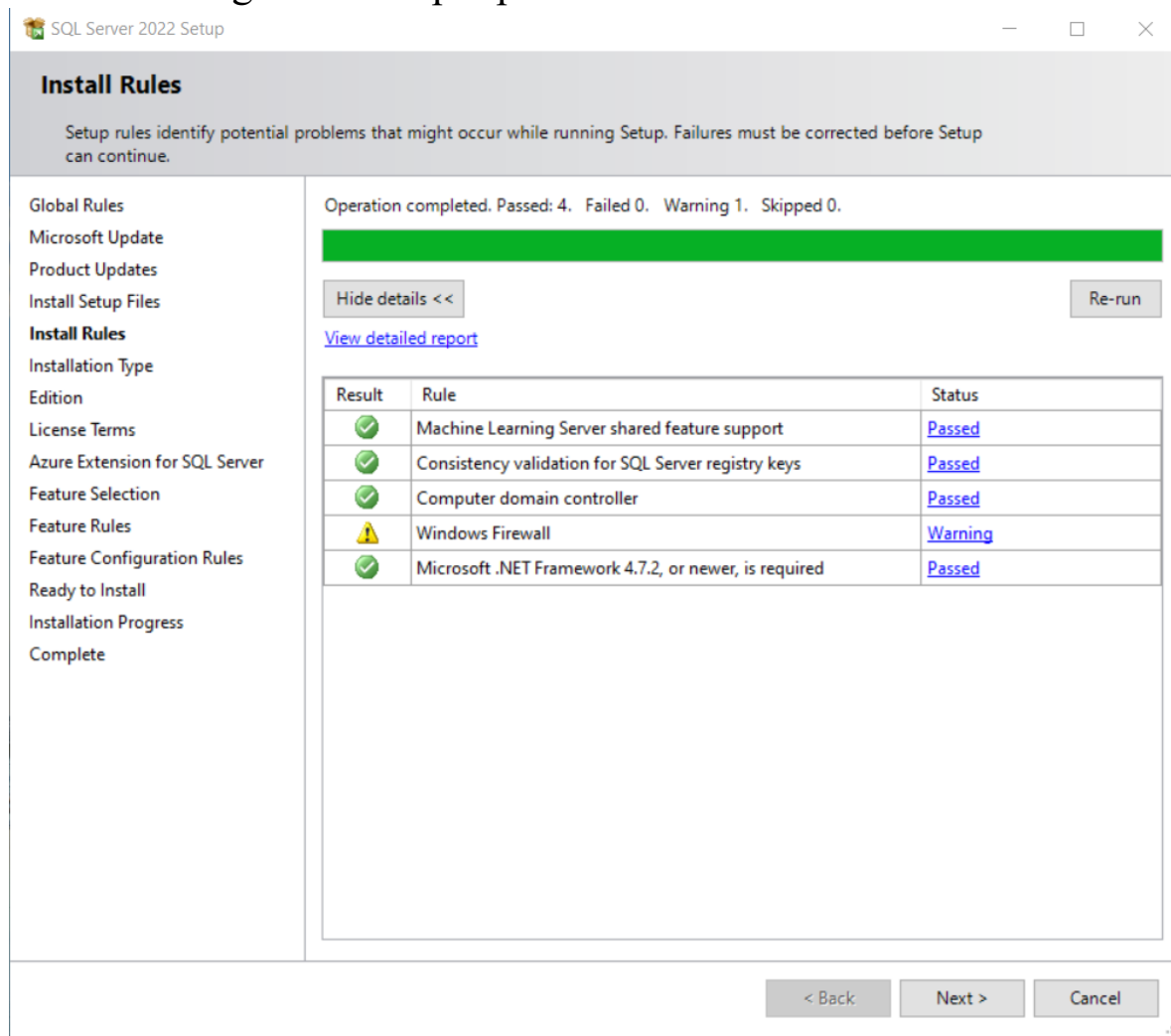
[Upgrade from a previous version of SQL Server](#)
Launch a wizard to upgrade a previous version of SQL Server to SQL Server 2022.
[Click here to first view Upgrade Documentation](#)

We will now begin the Setup Process



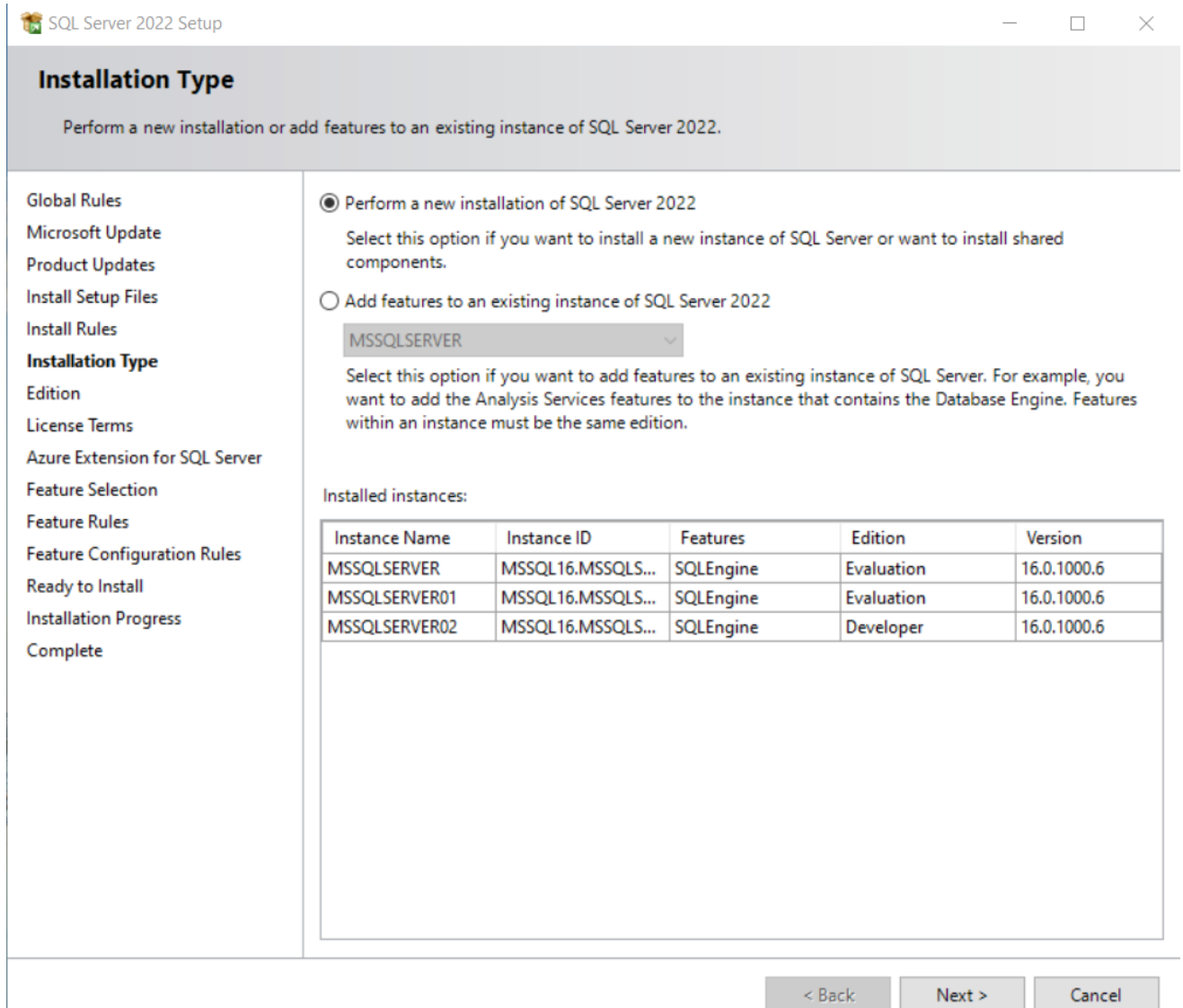
- 1.
2. And then click next

3. It will show a green line up top.



4.click next

5.



Click “Perform a new installation of SQL Server 2022”

Click next

6. select developer edition

- Global Rules
- Microsoft Update
- Product Updates
- Install Setup Files
- Install Rules
- Installation Type
- Edition**
- License Terms
- Azure Extension for SQL Server
- Feature Selection
- Feature Rules
- Feature Configuration Rules
- Ready to Install
- Installation Progress
- Complete

Select an edition of SQL Server to install. You can choose to either use a SQL Server license that you have already purchased by entering the product key or choose pay-as-you-go billing through Microsoft Azure. You can also specify a free edition of SQL Server: Developer, Evaluation, or Express. Evaluation has the largest set of SQL Server features, as documented in SQL Server Books Online, and is activated with a 180-day expiration. Developer edition does not have an expiration, has the same set of features found in Evaluation, but is licensed for non-production database application development only. To upgrade from one installed edition to another, run the Edition Upgrade Wizard.

Specify a free edition:

Developer

Use pay-as-you-go billing through Microsoft Azure:

Warning: To enable this option, you must have an active Azure subscription that you will be required to provide along with a resource group, Azure region, and tenant ID later in setup. For more information, see <https://aka.ms/ArcEnabledSqlPAYG>.

Standard

Enter the product key:

- - - -

I have a SQL Server license with Software Assurance or SQL Software Subscription

I have a SQL Server license only

SQL Server 2022 Setup

Edition

Select the edition of SQL Server 2022 you want to install.

- Global Rules
- Microsoft Update
- Product Updates
- Install Setup Files
- Install Rules
- Installation Type
- Edition**
- License Terms
- Azure Extension for SQL Server
- Feature Selection
- Feature Rules
- Feature Configuration Rules
- Ready to Install
- Installation Progress
- Complete

Select an edition of SQL Server to install. You can choose to either use a SQL Server license that you have already purchased by entering the product key or choose pay-as-you-go billing through Microsoft Azure. You can also specify a free edition of SQL Server: Developer, Evaluation, or Express. Evaluation has the largest set of SQL Server features, as documented in SQL Server Books Online, and is activated with a 180-day expiration. Developer edition does not have an expiration, has the same set of features found in Evaluation, but is licensed for non-production database application development only. To upgrade from one installed edition to another, run the Edition Upgrade Wizard.

Specify a free edition:

Evaluation

Use pay-as-you-go billing through Microsoft Azure:

Warning: To enable this option, you must have an active Azure subscription that you will be required to provide along with a resource group, Azure region, and tenant ID later in setup. For more information, see <https://aka.ms/ArcEnabledSqlPAYG>.

Standard

Enter the product key:

- - - -

I have a SQL Server license with Software Assurance or SQL Software Subscription

I have a SQL Server license only

Click next

7. Accept the license terms

8. MAKE SURE TO UNCLICK “Azure Extension for SQL Server”

Azure Extension for SQL Server

Azure Extension for SQL Server is required to enable Microsoft Defender for Cloud, Purview, and Azure Active Directory.

Global Rules
Microsoft Update
Product Updates
Install Setup Files
Install Rules
Installation Type
Edition
License Terms
Azure Extension for SQL Serv...
Feature Selection
Feature Rules
Feature Configuration Rules
Ready to Install
Installation Progress
Complete

Azure Extension for SQL Server

To install Azure extension for SQL Server, provide your Azure account or a service principal to authenticate the SQL Server instance to Azure. You also need to provide the Subscription ID, Resource Group, Region, and Tenant ID where this instance will be registered. For more information for each parameter, visit <https://aka.ms/arc-sql-server>.

Use Azure Login
 Use Service Principal

Azure Service Principal ID*

Azure Service Principal Secret*

Azure Subscription ID*

Azure Resource Group*

Azure Region*

Azure Tenant ID*

Proxy Server URL (optional)

Click next

9. We will now be installing the features. Make your screen displays the same as this image

(Select everything except for SQL Server Replication)

Instance Features

- Database Engine Services
 - SQL Server Replication
 - Machine Learning Services and Language Extensions
 - Full-Text and Semantic Extractions for Search
 - Data Quality Services
 - PolyBase Query Service for External Data
- Analysis Services

Shared Features

- Data Quality Client
- Integration Services
 - Scale Out Master
 - Scale Out Worker
- Master Data Services

Redistributable Features

Click next

*** incase needed → Reporting services download web link:
<https://learn.microsoft.com/en-us/sql/reporting-services/install-windows/install-reporting-services?view=sql-server-ver16>

10. Click Named instance. Enter a name. I used “SampleDB” and then click next.

Instance Configuration

Specify the name and instance ID for the instance of SQL Server. Instance ID becomes part of the installation path.

- Global Rules
- Microsoft Update
- Product Updates
- Install Setup Files
- Install Rules
- Installation Type
- Edition
- License Terms
- Azure Extension for SQL Server
- Feature Selection
- Feature Rules
- Instance Configuration**
- PolyBase Configuration
- Server Configuration
- Database Engine Configuration
- Analysis Services Configuration
- Integration Services Scale Out ...
- Integration Services Scale Out ...
- Feature Configuration Rules
- Ready to Install
- Installation Progress
- Complete

Default instance

Named instance: *

Instance ID:

SQL Server directory: C:\Program Files\Microsoft SQL Server\MSSQL16.MSSQLSERVER

Analysis Services directory: C:\Program Files\Microsoft SQL Server\MSAS16.MSSQLSERVER

Installed instances:

Instance Name	Instance ID	Features	Edition	Version
MSSQLSERVER	MSSQL16.MSSQLSERVER	SQLEngine	Evaluation	16.0.1000.6
MSSQLSERVER01	MSSQL16.MSSQLSERVER01	SQLEngine	Evaluation	16.0.1000.6
MSSQLSERVER02	MSSQL16.MSSQLSERVER02	SQLEngine	Developer	16.0.1000.6

11. Make sure yours is the same and click next

- Global Rules
- Microsoft Update
- Product Updates
- Install Setup Files
- Install Rules
- Installation Type
- Edition
- License Terms
- Azure Extension for SQL Server
- Feature Selection
- Feature Rules
- Instance Configuration
- PolyBase Configuration**
- Server Configuration
- Database Engine Configuration
- Analysis Services Configuration
- Integration Services Scale Out ...
- Integration Services Scale Out ...
- Feature Configuration Rules
- Ready to Install
- Installation Progress
- Complete

Specify a port range for PolyBase services (6 or more ports):

16450-16460

12. Do not change any of this, and click next

Server Configuration

Specify the service accounts and collation configuration.

- Global Rules
- Microsoft Update
- Product Updates
- Install Setup Files
- Install Rules
- Installation Type
- Edition
- License Terms
- Azure Extension for SQL Server
- Feature Selection
- Feature Rules
- Instance Configuration
- PolyBase Configuration
- Server Configuration**
- Database Engine Configuration
- Analysis Services Configuration
- Integration Services Scale Out ...
- Integration Services Scale Out ...
- Feature Configuration Rules
- Ready to Install
- Installation Progress
- Complete

Service Accounts Collation

Microsoft recommends that you use a separate account for each SQL Server service.

Service	Account Name	Password	Startup Type
SQL Server Agent	NT Service\SQLAgent\$SAMPLEDB		Manual <input type="checkbox"/>
SQL Server Database Engine	NT Service\MSSQL\$SAMPLEDB		Automatic <input type="checkbox"/>
SQL Server Analysis Services	NT Service\MSOLAP\$SAMPLEDB		Automatic <input type="checkbox"/>
SQL Server Integration Services 16.0	NT Service\MSDtsServer160		Automatic <input type="checkbox"/>
SQL Server Integration Services Scale Out Master 16.0	NT Service\SSISScaleOutMaster160		Automatic <input type="checkbox"/>
SQL Server Integration Services Scale Out Worker 16.0	NT Service\SSISScaleOutWorker160		Automatic <input type="checkbox"/>
SQL Server PolyBase Engine	NT AUTHORITY\NETWORK SERVICE		Automatic <input type="checkbox"/>
SQL Server PolyBase Data Movement	NT AUTHORITY\NETWORK SERVICE		Automatic <input type="checkbox"/>
SQL Server Launchpad	NT Service\MSSQLLaunchpad\$SAMPLEDB		Automatic <input type="checkbox"/>
SQL Full-text Filter Daemon Launcher	NT Service\MSSQLFDLauncher\$SAMPLEDB		Manual <input type="checkbox"/>
SQL Server Browser	NT AUTHORITY\LOCALSERVICE		Automatic <input type="checkbox"/>

Grant Perform Volume Maintenance Tasks privilege to SQL Server Database Engine Service

This privilege enables instant file initialization by avoiding zeroing of data pages. This may lead to information disclosure by allowing deleted content to be accessed.

[Click here for details](#)

13. Make sure windows authentication mode is selected. Click Add current user. Then click next

Database Engine Configuration

Specify Database Engine authentication security mode, administrators, data directories, TempDB, Max degree of parallelism, Memory limits, and Filestream settings.

- Global Rules
- Microsoft Update
- Product Updates
- Install Setup Files
- Install Rules
- Installation Type
- Edition
- License Terms
- Azure Extension for SQL Server
- Feature Selection
- Feature Rules
- Instance Configuration
- PolyBase Configuration
- Server Configuration
- Database Engine Configuration**
- Analysis Services Configuration
- Integration Services Scale Out ...
- Integration Services Scale Out ...
- Feature Configuration Rules
- Ready to Install
- Installation Progress
- Complete

Server Configuration | Data Directories | TempDB | MaxDOP | Memory | FILESTREAM

Specify the authentication mode and administrators for the Database Engine.

Authentication Mode

Windows authentication mode

Mixed Mode (SQL Server authentication and Windows authentication)

Specify the password for the SQL Server system administrator (sa) account.

Enter password:

Confirm password:

Specify SQL Server administrators

DESKTOP-5SUL81P\natha (natha)	SQL Server administrators have unrestricted access to the Database Engine.
-------------------------------	--

14. Click on Multidimensional Mode. Then, click on add current user. Click next

Analysis Services Configuration

Specify Analysis Services server modes, administrators, and data directories.

- Global Rules
- Microsoft Update
- Product Updates
- Install Setup Files
- Install Rules
- Installation Type
- Edition
- License Terms
- Azure Extension for SQL Server
- Feature Selection
- Feature Rules
- Instance Configuration
- PolyBase Configuration
- Server Configuration
- Database Engine Configuration
- Analysis Services Configuration**
- Integration Services Scale Out ...
- Integration Services Scale Out ...
- Feature Configuration Rules
- Ready to Install
- Installation Progress
- Complete

Server Configuration | Data Directories

Server Mode:

Multidimensional Mode

Tabular Mode

Specify which users have administrative permissions for Analysis Services.

DESKTOP-5SUL81P\natha (natha)	Analysis Services administrators have unrestricted access to Analysis Services.
-------------------------------	---

15. These are the default settings, Make sure yours look similar, if so click next.

Integration Services Scale Out Configuration - Master Node

Specify the port number and security certificate for the Scale Out Master node.

- Global Rules
- Microsoft Update
- Product Updates
- Install Setup Files
- Install Rules
- Installation Type
- Edition
- License Terms
- Azure Extension for SQL Server
- Feature Selection
- Feature Rules
- Instance Configuration
- PolyBase Configuration
- Server Configuration
- Database Engine Configuration
- Analysis Services Configuration
- Integration Services Scale Ou...**
- Integration Services Scale Out ...
- Feature Configuration Rules
- Ready to Install
- Installation Progress
- Complete

Specify a port number that the master node uses to communicate with the worker nodes.

Port Number:

Select a SSL certificate that is used for the communication between the master node and worker nodes in the scale out topology. A default self-signed certificate is created if you choose to create a new SSL certificate.

Create a new SSL certificate

CNs in the certificate:

Use an existing SSL certificate

16. These are the default settings, Make sure your screen looks similar, if so click next.

Integration Services Scale Out Configuration - Worker Node

Specify the master node endpoint and security certificate used by the Scale Out Worker node.

- Global Rules
- Microsoft Update
- Product Updates
- Install Setup Files
- Install Rules
- Installation Type
- Edition
- License Terms
- Azure Extension for SQL Server
- Feature Selection
- Feature Rules
- Instance Configuration
- PolyBase Configuration
- Server Configuration
- Database Engine Configuration
- Analysis Services Configuration
- Integration Services Scale Out ...
- Integration Services Scale Ou...**
- Feature Configuration Rules
- Ready to Install
- Installation Progress
- Complete

Provide the master node endpoint which the worker node needs to connect to (e.g. https://[MasterNodeMachineName]:[Port]):

Configure the SSL certificate of master node to trust in this machine. The master's SSL certificate needs to be trusted on this worker node for establishing the connection between worker and master. This is optional if your master certificate has already been trusted, i.e. it's issued by a trusted CA (Certification Authority) on this machine, or the master is installed on the same machine. Otherwise, please provide the master's client SSL certificate, i.e. the certificate is created and self-signed by yourself and the master is not on the same machine.

17. Congrats!!! You made it, click install and bask in the glory

Ready to Install

Verify the SQL Server 2022 features to be installed.

- Global Rules
- Microsoft Update
- Product Updates
- Install Setup Files
- Install Rules
- Installation Type
- Edition
- License Terms
- Azure Extension for SQL Server
- Feature Selection
- Feature Rules
- Instance Configuration
- PolyBase Configuration
- Server Configuration
- Database Engine Configuration
- Analysis Services Configuration
- Integration Services Scale Out ...
- Integration Services Scale Out ...
- Feature Configuration Rules
- Ready to Install**
- Installation Progress
- Complete

Ready to install SQL Server 2022:

- Summary
 - Edition: Developer
 - Action: Install
- Prerequisites
 - Already installed:
 - Windows PowerShell 3.0 or higher
 - Microsoft Visual C++ 2017 Redistributable
 - To be installed from media:
 - Microsoft Visual Studio Tools for Applications 2019
 - Microsoft MPI v10
- General Configuration
 - Features
 - Database Engine Services
 - Machine Learning Services and Language Extensions
 - Full-Text and Semantic Extractions for Search
 - Data Quality Services
 - PolyBase Query Service for External Data
 - Analysis Services
 - Data Quality Client
 - Integration Services
 - Scale Out Master
 - Scale Out Worker
 - Master Data Services
- Instance configuration

Configuration file path:

C:\Program Files\Microsoft SQL Server\160\Setup Bootstrap\Log\20230815_132125\ConfigurationFile.ini


< Back Install Cancel

18. Sit back, watch the install progress.

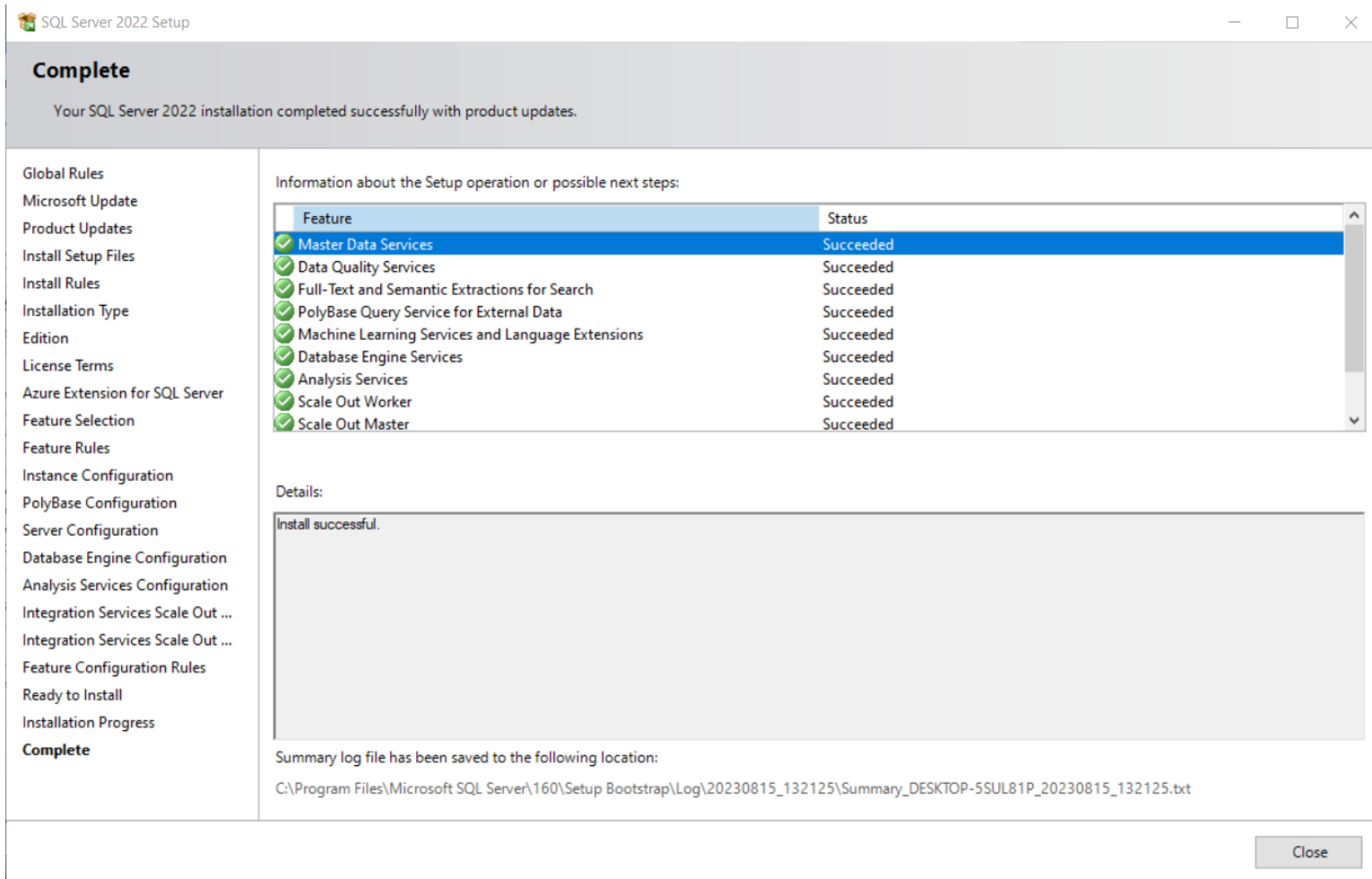
Installation Progress

- Global Rules
- Microsoft Update
- Product Updates
- Install Setup Files
- Install Rules
- Installation Type
- Edition
- License Terms
- Azure Extension for SQL Server
- Feature Selection
- Feature Rules
- Instance Configuration
- PolyBase Configuration

Running package: VSTA



19. Once complete, your screen should look like this!



20. Install SQL Sever Management Studio via this link

<https://learn.microsoft.com/en-us/sql/ssms/download-sql-server-management-studio-ssms?view=sql-server-ver16>

Download SSMS

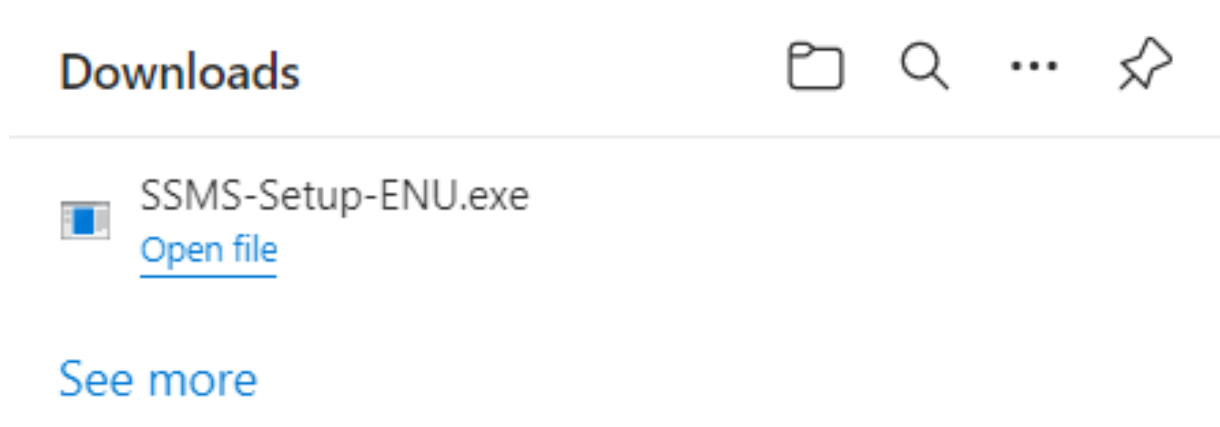
↓ [Free Download for SQL Server Management Studio \(SSMS\) 19.1](#) ↗

SSMS 19.1 is the latest general availability (GA) version. If you have a *preview* version of SSMS 19 installed, you should uninstall it before installing SSMS 19.1. If you have SSMS 19.x installed, installing SSMS 19.1 upgrades it to 19.1.

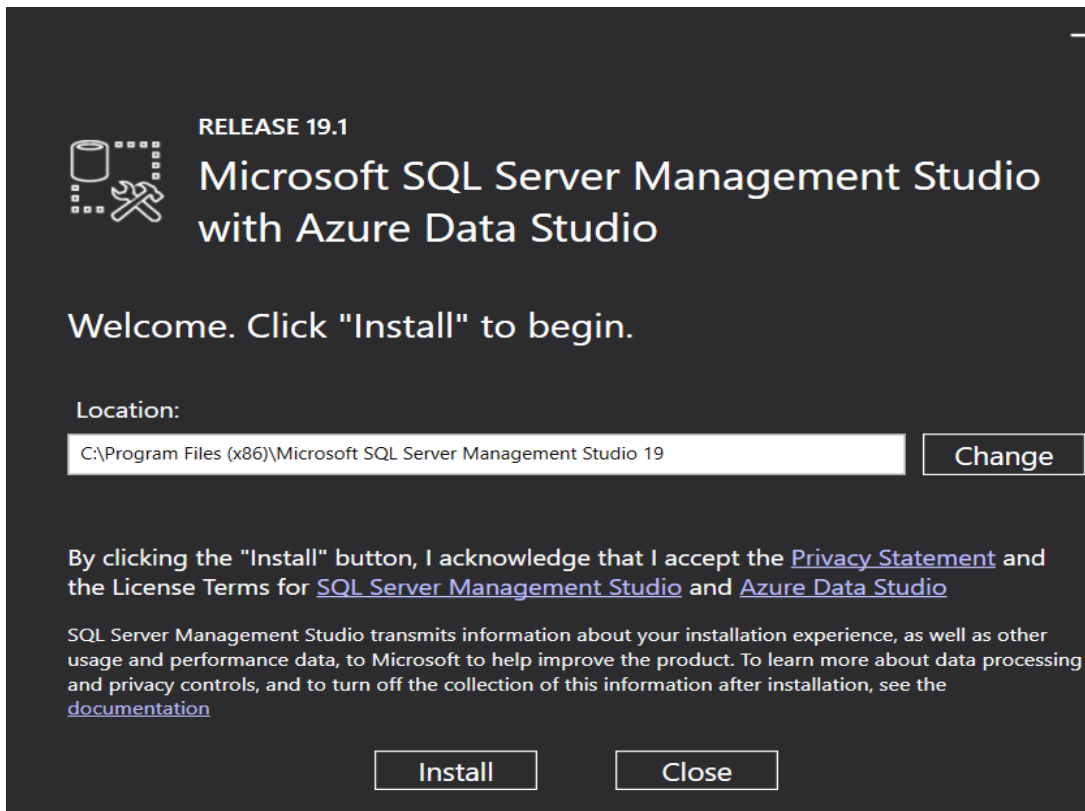
- Release number: 19.1
- Build number: 19.1.56.0
- Release date: May 24, 2023

Click on the free download for SQL server management studio SSMS 19.1 link

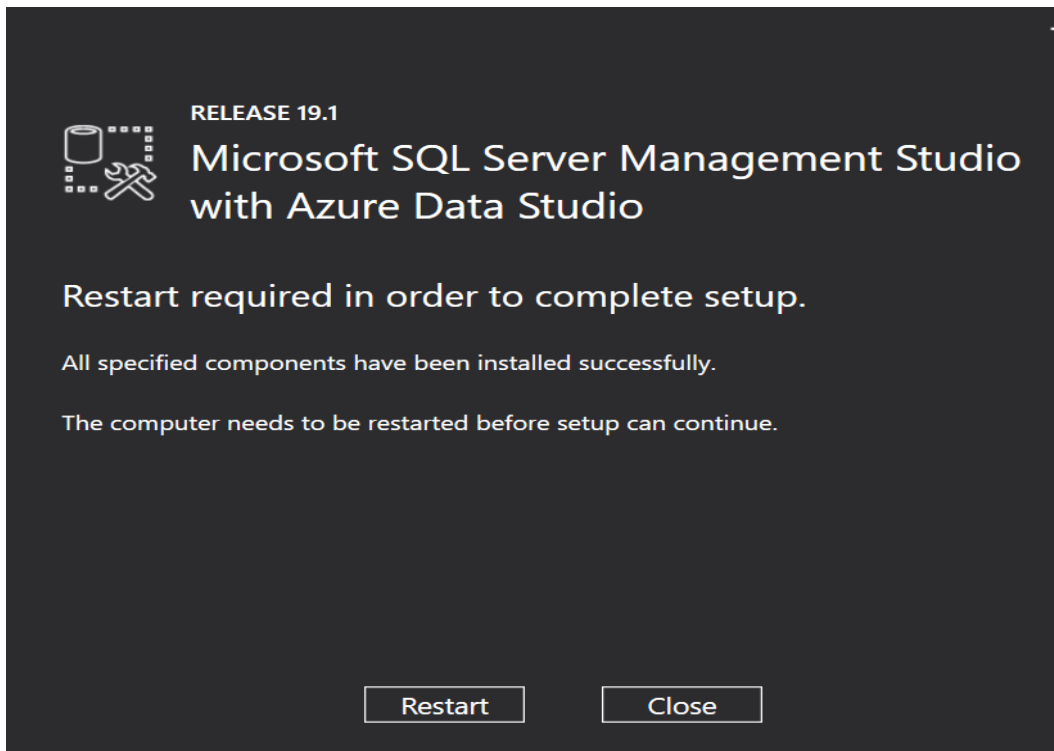
Once the file is done downloading, Open it.



21.click install



22. Once done, you will need to restart your computer.



Congrats, you are finally ready to get started using your software!!!!!!