

Green Camp Initiative



Campus Action Plan
Hole-in-the Wall Gang Camp
Ashford, CT



At Eastern Connecticut
State University

William Leahy, Director
Institute for Sustainable Energy
at

Eastern Connecticut State University

Twelve Steps to a *Sustainable (Green) Camp*

1. **Activities**
2. **Staff Training**
3. **Purchasing and Administrative Services**
4. **Solid Waste Reduction and Recycling**
5. **Energy Conservation**
6. **Green Energy**
7. **Water and Waste Water Management**
8. **Hazardous Waste Management**
9. **Transportation**
10. **Food and Food Service**
11. **Camp Grounds and Land Use**
12. **Facility Planning and Design**

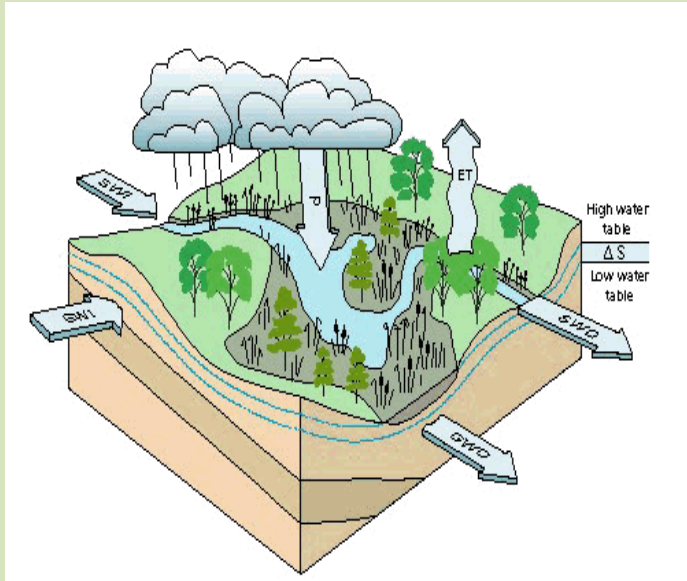
Activities



- Play games related to environmental awareness
- Each cabin is assigned a trail to keep clean for the summer
- Start a weather forecasting program
- Have a nature day
- Dedicate a tree to the camp → place to tell stories
- Participate in local clean up projects
- Put up “bud bursts” poster noting leaf growth on all trees and when they bud
- Blank posters around camp so campers can write about their nature discoveries
- Hands-on discovery table
- Create nature artwork (birdhouses, leaf drawings, etc.)



Staff Training



- Teach Environmental Literacy & Ecology
- The Camp as a “Learning Laboratory”
- Engage the whole Community
- Add a section on the camp website about going green
- Encourage others to conserve
- Provide camp program ideas
- Be aware of environmental issues to teach the campers about
- Have field guides to educate staff on organisms found throughout the camp
- Put pamphlets and posters up educating campers



Solid Waste Management and Recycling

- Establish a Waste Reduction Ethic
- Perform Analysis
- Minimize
- Provide Convenient Stations
- Special Collection Days
- Promote Repair and Swap
- Recognize Performance
- Encourage participation
- Use half sheets when printing
- Use email more and scrap paper
- Recycled arts and crafts
- Make compost area
- Use rechargeable batteries in flashlights

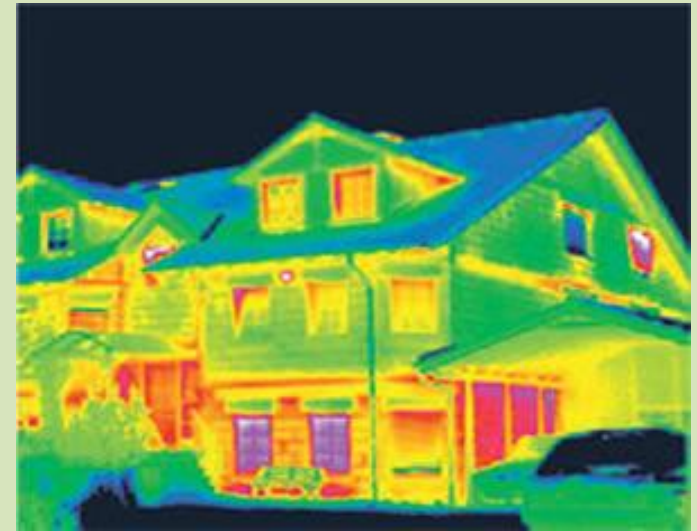
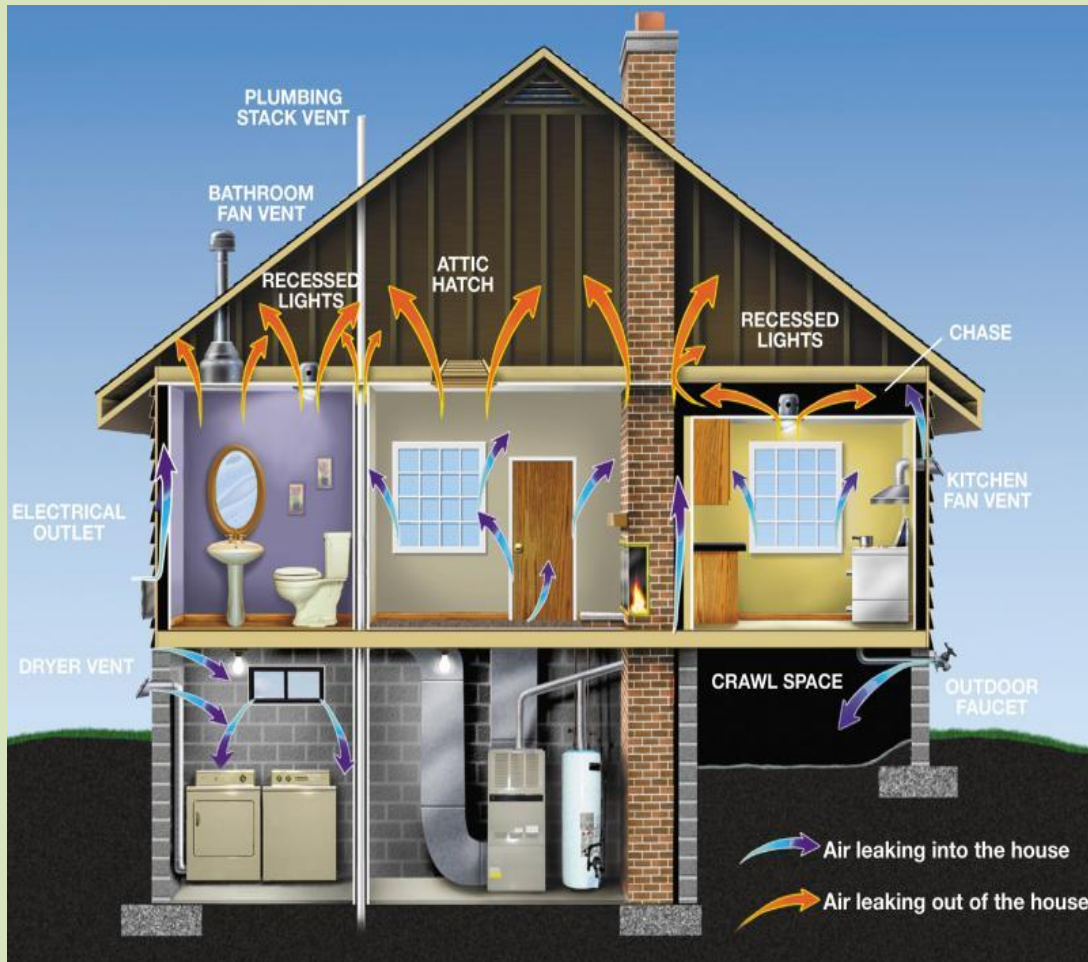


Energy Conservation

- Track Use and Cost
- Meter & Sub-meter
- Benchmark & Rank Buildings
- Use Life Cycle Analysis
- Retrofit and Renovate
- Participate in Conservation Programs
- Encourage Involvement
- Energy Saving Contests
- Check insulation, appliances, and boilers
- Use computerized thermostats



Where does the Energy Go?



**Energy Efficiency
is the
Most Cost Effective
Strategy**

Green Energy

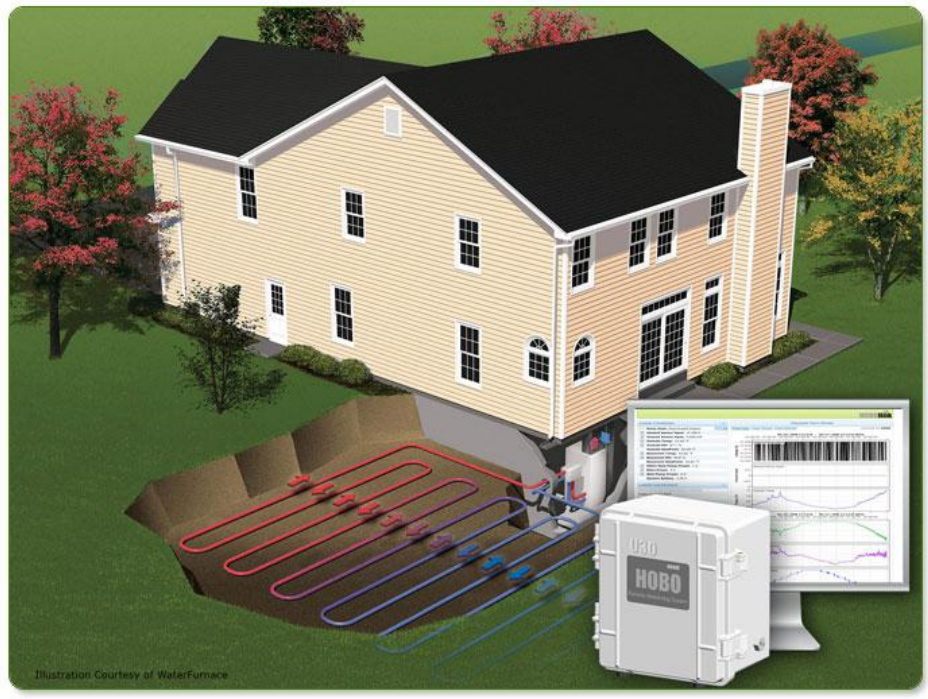
- Improve Campus Efficiency First
- Convert from High Emission Fuels
- Purchase Green Power
- Install Renewable Energy Systems
- Consider Carbon Sequestering
- Install sun filters on windows
- Put out weather instruments



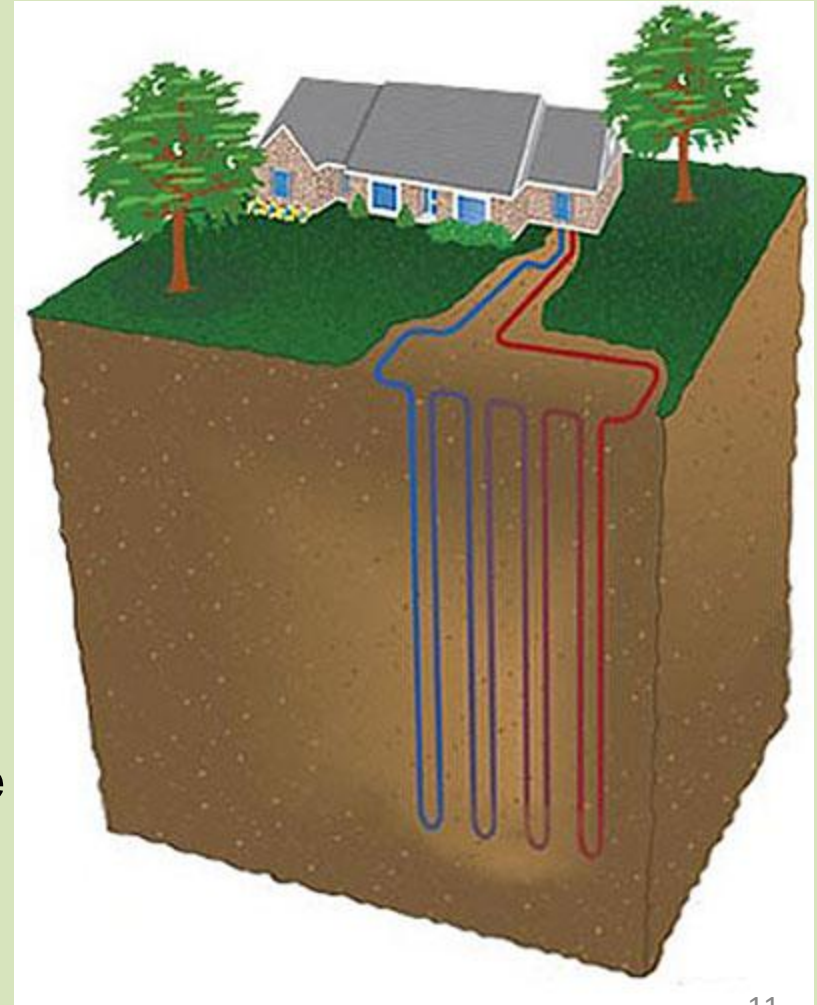
On-Site Solar Applications



Geothermal Exchange

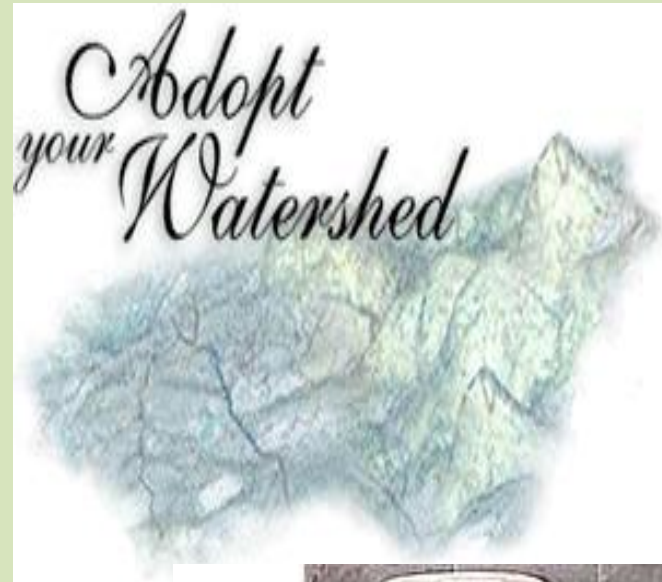


Utilize heat pumps and the temperature of the earth to heat and cool



Water and Waste Water Management

- Report, Respond and Repair
- Retrofit with “Water Savers”
- Consider Waterless
- Minimize Irrigation
- Capture Rainwater
- Protect Groundwater
- Take shorter showers
- Use low flow shower heads
- Install a waterless urinal



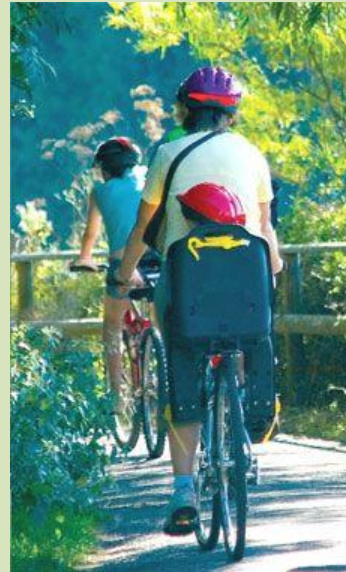
Hazardous Waste Management

- Exceed Haz-Mat requirements
- Educate Generators
- Develop Tracking
- Switch to Non-Toxics
- Recycle & Recover
- Ensure Proper Disposal

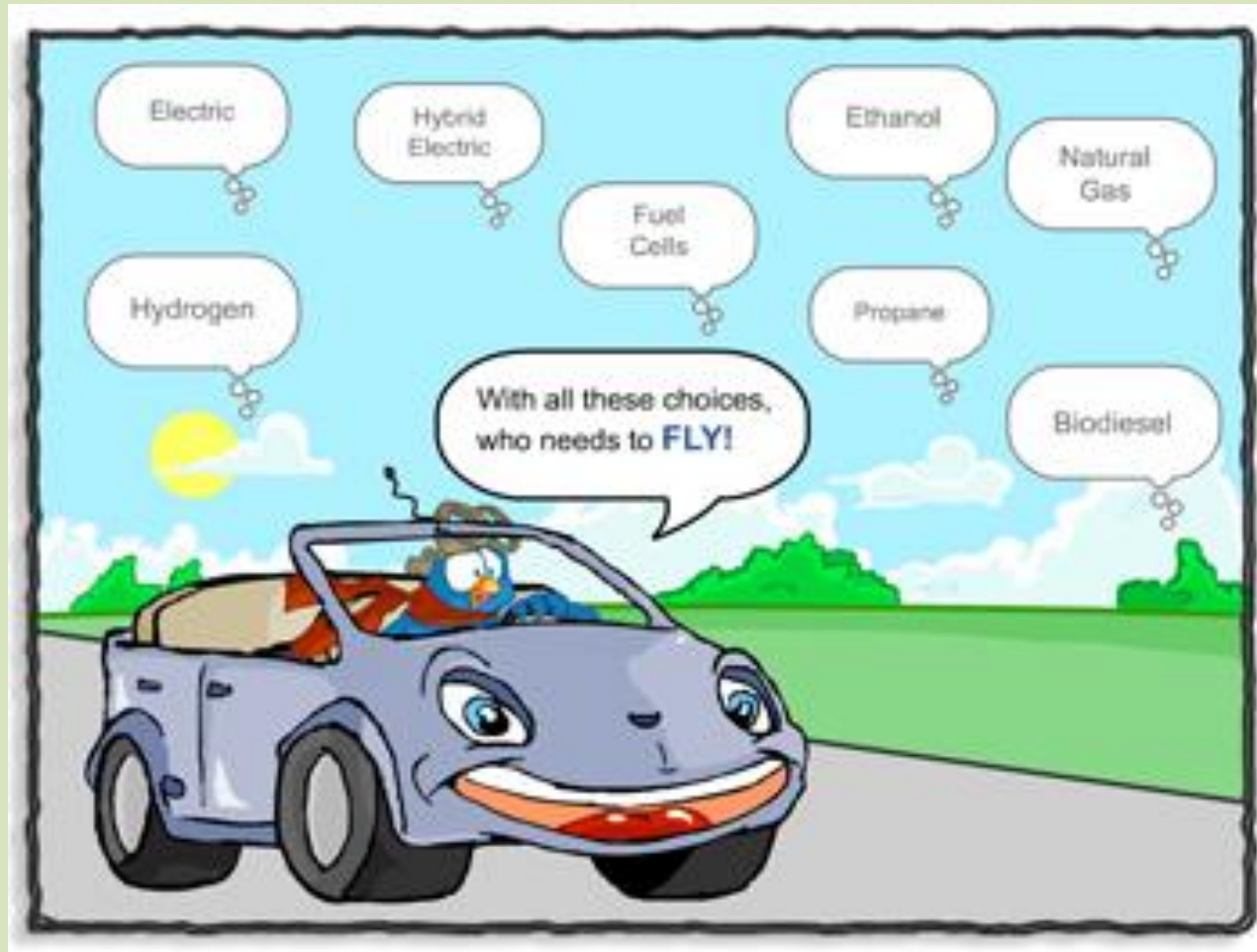


Transportation

- Encourage Car- Pooling & Ride-Share
- Use Appropriately Sized Vehicle
- Use Public Transportation
- Support Bikes and Walking
- Convert Vehicles to Electric & Alternate Fuels
- Create bicycle racks



Alternative Fuels



Food and Food Service

- Buy Locally in Season
- Eat “Low on the Food Chain”
- Support Organic Food Producers and Suppliers
- Minimize Disposable Trays, Plates, Utensils
- Promote Reusable Mugs
- Plant a vegetable garden
- Food waste monitoring system



Campus Grounds and Land Use

- Redefine Camp Beauty
- Reduce Lawn Areas
- Protect Wetlands, Watershed and Wildlife
- Protect Trees
- Plant Native Species
- Natural Walkways Evolve
- Build and put of bird houses
- Keep records of natural occurrences



New Construction

- Don't Oversize & Overbuild
- Use High Performance Building Standards
- Exceed Energy Codes
- Use Natural Systems
- Incorporate Renewables
- Use Environmentally Friendly Materials
- Use Life-Cycle analysis
- Recycle Construction Debris



Camp Planning and Design

- Develop a Master Plan
- Preserve Green Space
- Minimize On-Campus Driving
- Maintain Indigenous Plantings
- Preserve Solar Access
- Perform Impact Review of All Expansion Plans



What Can You Do?



- **Brainstorm**
- **Organize energy saving competitions**
- **Organize recycling efforts**
- **Use buses and carpool to save fuel and money**
- **Encourage change in cafeteria menu and service**
- **Conduct “buy local” campaigns**
- **Encourage walking and bike riding**



www.SustainEnergy.org



[HOME](#) [ABOUT US](#) [ENERGY EDUCATION](#) [ENERGY SOLUTIONS](#) [ENERGY RESOURCES](#) [ENERGY POLICY](#)

About Us

[Energy Education](#)

[Energy Solutions](#)

[Energy Resources](#)

[Energy Policy](#)

[Recent Presentations](#)

[Join Our Mailing List](#)

The Institute for Sustainable Energy focuses on matters relating to energy education, energy policy, energy efficiency, energy conservation and load management, renewable energy, distributed generation, protection of environmental resources, and the dissemination of useful information on energy alternatives and sustainability to users and providers of energy. The Institute adds an unbiased focus on practical applications and dissemination of information about how to improve the energy profile and sustainability of Connecticut and the region.



The Institute for Sustainable Energy is funded and supported by the Connecticut Energy Efficiency Fund through the Energy Conservation Management Board and the Connecticut Clean Energy Fund.



Green Collar Jobs



High Performance School Initiative



CT Green Campus Initiative



Green Campus Initiative (on www.sustainenergy.org)



HOME | ABOUT US | CONTACT US | SITE MAP

 Working Together for a Sustainable Future

- K-8 EDUCATION**
Creating a sustainable future starts with our youngest citizens.
- GRADE 9-12 EDUCATION**
Sustainability education is essential for those who will form the backbone of our society.
- COLLEGES & UNIVERSITIES**
Student and institutions form the cutting edge of advancing a sustainable world.

"It's not easy being green!"
- Kermit T. Frog

Home >> Colleges & Universities

Welcome to Green Campus - Colleges & Universities

The Institute for Sustainable Energy and the Connecticut Department of Environmental Protection supports regional, national and international climate change efforts by making facilities more energy efficient and environmentally friendly. Learn how your institution can join the "Green Campus Initiative" in Connecticut and participate in the New England Climate Change Action Plan. Also, join the Northeast University Coalition in support of the United Nations Decade for Education in Sustainable Development.

The Institute has initiated a project to research, identify and promote an effective approach to sustainability on college and university campuses in Connecticut. The Institute provides leadership and resources to Connecticut schools interested in taking a comprehensive sustainability approach aimed at lowering energy use and cost, reducing greenhouse gases from building systems and transportation, water and waste water management, improving recycling, hazardous waste reduction and disposal, and materials procurement. This approach targets twelve areas of sustainable activity on a typical campus.

As part of the green campus initiative, several environmental projects are being piloted on Eastern Connecticut State University. In addition, ECSU is a signatory of the **Talloires Declaration** and has also received a campus ecology report card from the **National Wildlife Federation**. Information on the sustainability model that is being developed at ECSU is available on this website or by contacting the Institute for Sustainable Energy at (860) 465 - 0251 or e-mail buschb@stu.easternct.edu.

- » WHY SUSTAINABLE SCHOOLS?
- » 12 STEPS TOWARD SUSTAINABILITY
 - » TEACHING AND RESEARCH
 - » PURCHASING AND ADMINISTRATIVE SERVICES
 - » SOLID WASTE REDUCTION AND RECYCLING
 - » ENERGY CONSERVATION
 - » ENERGY PURCHASING
 - » WATER AND WASTEWATER
 - » HAZARDOUS MATERIALS
 - » TRANSPORTATION
 - » FOOD AND FOOD SERVICES
 - » CAMPUS GROUNDS AND LAND USE
 - » NEW CONSTRUCTION
 - » CAMPUS PLANNING AND DESIGN
- » RESOURCES
- » LINKS TO SUSTAINABLE CAMPUSES
- » WORKSHOP PRESENTATIONS
- » CALENDAR OF EVENTS

CT Energy Information

www.ctenergyinfo.com



It's Your Energy. Use it wisely.
1-877-WISE-USE

« [CT ENERGY INFO HOME](#) [About CTEnergy Info](#) ▶ [CT Energy Efficiency Fund](#) ▶ [Events Calendar](#) ▶ [Newsletter Sign-Up](#) ▶ search:

- Residential Resources
- Business Resources
- Community Resources
- Energy Assistance
- Ways to Save
- Renewable Energy
- Green Buildings

MY ENERGY POLICY:

What's your energy policy?

Make a list of smart ways to approach your personal energy use. Lower your energy costs. Make earth-friendly decisions. And find out how energy is created and gets to you. Use the resources collected on this site to learn more.

And adopt your own energy policy today.

Energy News

[View All Stories ▶](#)

[Governor Rell Announces New Energy Audit Program for Homes with Oil and Propane](#)

Homeowners who heat with oil or propane can participate in this program that offers a clean, tune and test of your heating system as well as professional home weatherization services.

Participation is limited based on available funding.

[CTCleanEnergyOptions reaches milestone - 20,000 enrolled.](#)

The CTCleanEnergyOptions program

Feature



CT Power Update

[View Full Graph ▶](#)



- Past Seasonal Peak Demand - 4700 MW
- Today's Forecasted Demand
- Actual Demand

Questions?

Green Campus Initiative

“ It’s not easy being GREEN ! ”
Kermit T. Frog

