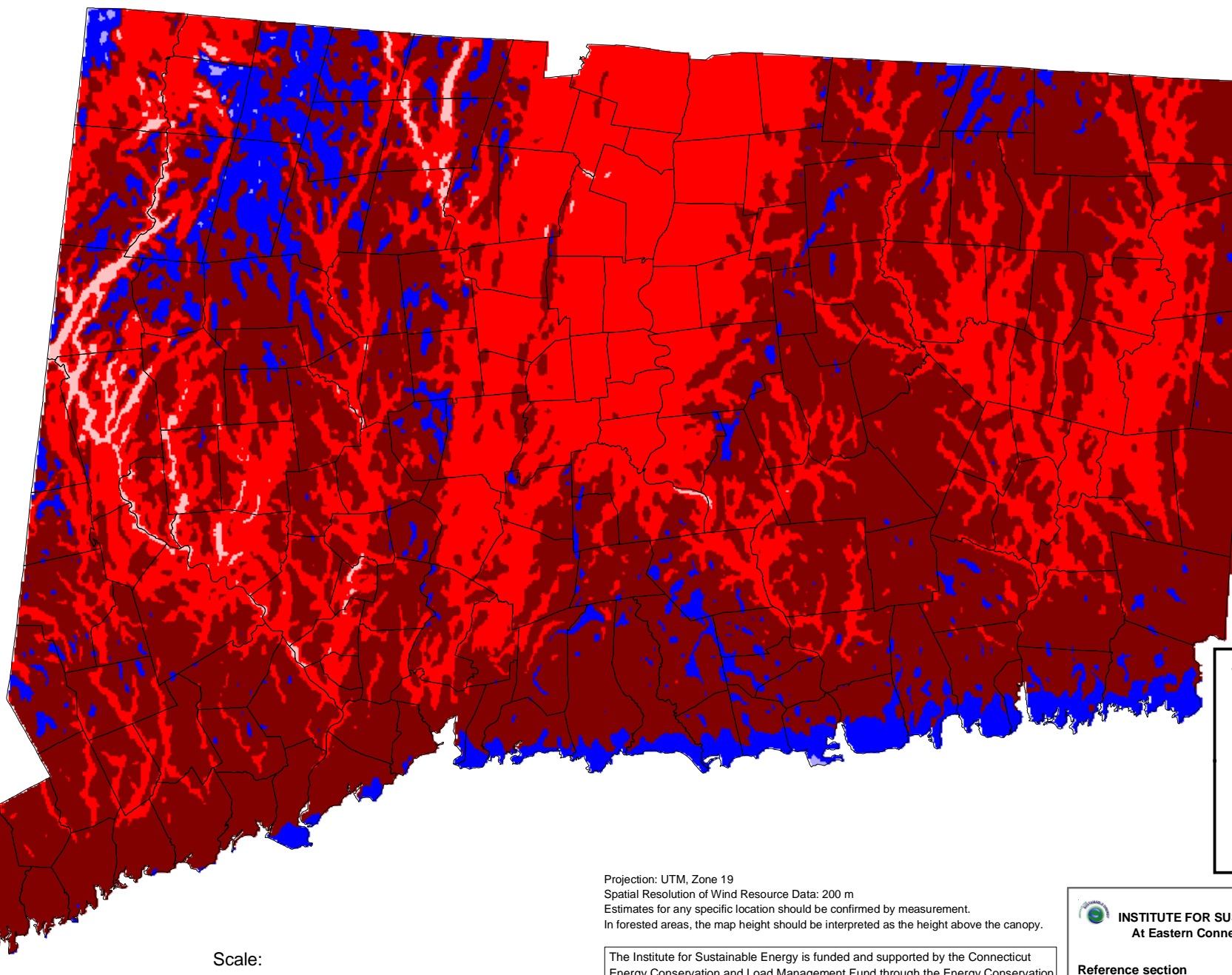
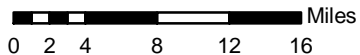


Wind Energy Resource Atlas of Connecticut (100 M)



Projection: UTM, Zone 19
Spatial Resolution of Wind Resource Data: 200 m
Estimates for any specific location should be confirmed by measurement.
In forested areas, the map height should be interpreted as the height above the canopy.

Scale:



The Institute for Sustainable Energy is funded and supported by the Connecticut Energy Conservation and Load Management Fund through the Energy Conservation Management Board and the Connecticut Clean Energy Fund. The Institute also receives funding for specific projects from the Department of Energy and the Environmental Protection Agency.

 **INSTITUTE FOR SUSTAINABLE ENERGY**
At Eastern Connecticut State University

Reference section

CT Department of Environmental Protection
Massachusetts Technology Collaborative