



LORA LEE
ILLUSTRATION

FAIC 322
860 465 5132
libo@easternct.edu
loraleedesign.com

ASSOCIATE PROFESSOR

Lora Lee is a multi-media artist with a proven track record in delivering multi-dimensional creative solutions. Her expertise lies in graphic design, illustration, concept art, digital imaging, and animation. She has worked with many clients including Mattel, Scholastic, Penguin Random House, Within Ad Agency, First Bank of Berne, Steel Dynamics, etc. Professor Lee earned her MFA in Illustration and MBA from the University of Hartford, CT.

- Professor Lee designed thousands of icons, animated symbols, and image assets for Speak Agent, an audiovisual learning platform for teachers.
- Professor Lee is the sole illustrator for 8 children's books, and her illustrations are featured in numerous titles in children's, young adult, and adult literature.



TOP:
The Map of Dragons,
Ink on Paper & Digital.

MIDDLE:
Children's Book
Illustration, Digital.

BOTTOM:
Book Cover Illustration
Designs, Graphite on
Paper & Digital.



TOP:
Ingrid's Park
2003. Oil on
canvas.
2010.

BOTTOM
LEFT:
In the Park
#8. Oil on
canvas.
2009.

BOTTOM
RIGHT:
White &
Black, and
In Between.
Acrylic on
canvas.
2020.



QIMIN LIU
STUDIO ART

FAIC 320
860 237 1081
liuq@easternct.edu
facebook.com/qimin.liu.33

PROFESSOR

Qimin Liu received a Teaching Certificate from Haerbin Normal University, a Bachelor of Fine Arts from the Institute of Chinese Traditional Drama, a Master of Arts from Iowa State University, and a Master of Fine Arts from Pennsylvania Academy of Fine Arts. He started teaching painting and drawing in the Arts and Art History Department of Eastern Connecticut State University in the Fall of 2000, now a tenured full Professor mainly focuses on teaching figure drawing, landscape, and different areas of major topics.

- Solemn & Sublime: Contemporary American Figurative Painting, Akus gallery. Oct 21-Dec 2, 2010.
- "Selected Contemporary American Figurative Painters" Tianjin Art Publishing House, Tianjin, Essay & Editor by Qimin Liu, 2009.
- Connecticut Contemporary: 24 Artists Who Are All Over the Map In style, Media and Imagination. Wadsworth Athenaeum Museum of Art, April 19-Aug. 12, 2007.



AFARIN RAHMANIFAR
STUDIO ART

FAIC 312
860 465 5214
rahmanifara@easternct.edu
afarinrahmanifar.com

ASSOCIATE PROFESSOR

Afarin Rahmanifar is an Iranian American Artist/Educator and Curator based in Connecticut. She holds her Master of Fine Arts degree from University of Connecticut. She is currently associate professor at ECSU. Her multidisciplinary work consists of mixed media painting, installation, printmaking, sculpture, and animation film production. Her work has been written about, and featured on the cover of "Eastern Art Report" art magazine, London, UK. Rahmanifar's work has been exhibited and privately collected nationally and internationally.

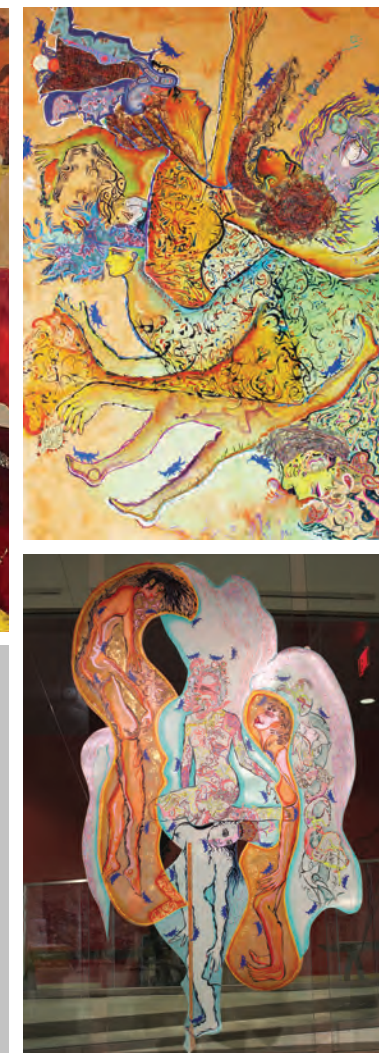
- Afarin Rahmanifar's work concerns with the absence of women's voice throughout societies and cultures. As a storyteller she depict women as protagonist characters in her work. In her most recent series, Rahmanifar highlights the role of women characters in "Shahnameh" Persian "Book of Kings" and "Unknown Women" in "Ta'Zieh" the mythical and symbolic style of poetry.
- Her recent solo exhibitions are, Two Coats of Paint, NY; SOHO20 Gallery, NY; Asian Art Gallery, Towson University, MD; Museum of Art, Juniata College, PA.



TOP LEFT:
"Unknown Women" - Women in
Ta'Zieh #3. Mixed media on
canvas. 5' x 9'. 2022.

TOP RIGHT:
Women of Shahnameh: Bijan
and Manijeh. Mixed media on
wood panel. 4' x 6'. 2021.

BOTTOM:
The Forgotten Women #1
(From Women of Shahnameh),
Mixed media installation on Yupo
and Vellum paper. 5'X9'. 2022.



ART
&
ART
HISTORY
FACULTY
INTRODUCTION

Department of Art and Art History
(860) 465-0197 | Fine Arts Instructional Center 317
www.easternct.edu/art-and-art-history



OUR FACULTY



TOP: The Silent Bellow 6.
 BOTTOM LEFT: Sculpted by Time 2.
 BOTTOM RIGHT: The Silent Bellow 1.



MAEVE DOYLE

ART HISTORY

FAIC 319
 860 465 4345
 doylemae@easternct.edu
 maevedoylephd.com

ASSOCIATE PROFESSOR

Dr. Doyle is an art historian specializing in the book arts of medieval Europe. She teaches courses on art from medieval Europe, Islamic art, gender and art, and world portraiture. Outside the classroom, her research focuses on issues of gender and identity in medieval art, using approaches from the digital humanities to queer theory. She received her PhD from Bryn Mawr College.

- Dr. Doyle has traveled to over a dozen libraries on three continents to study illuminated manuscripts. She loves touching old books!
- Dr. Doyle is useful in museums. Once a stranger rested their camera on her head to take a picture of Leonardo da Vinci's portrait of Ginevra de' Benci.



TOP:
 Dr. Doyle holds open one of the books in her research, made around 1300.

MIDDLE:
 A dragon has an unfortunate encounter with Saint Margaret in a medieval manuscript.



BOTTOM:
 Students in Dr. Doyle's class study portraits from Eastern's collection.

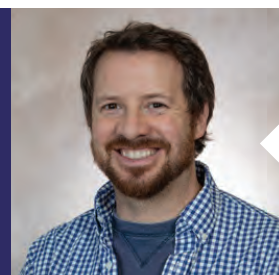


TOP LEFT:
 Cradled Hive.

TOP RIGHT:
 Cradled Hive (Detail).

BOTTOM LEFT:
 Marionette.

BOTTOM RIGHT:
 Frenetic Composure.



ROBERT GREENE

STUDIO ART

FAIC 306
 860 465 5133
 greener@easternct.edu
 rgreeneart.com

ASSOCIATE PROFESSOR

Robert Greene is an East Coast artist/sculptor. His work deals primarily with the human condition. The activity of the mind and nervous system is his main inspiration. His sculptures have gained recognition along the East Coast with many pieces in both private and public collections. He continues to exhibit in conjunction with staying busy creating original pieces and making new discoveries in his studio in Oakdale. He believes that, "creativity and innovation go hand in hand."

- Robert had a sculpture featured in the New York Times where it was highlighted in a prominent room the Annual Kips Bay Decorator Show House.
- His work has been mentioned from local newspapers to the Boston Globe along with dozens of NY blogs.
- Enjoys working and teaches in a multitude of medias; wood, metal, clay, mixed media. (From solo sculpture to installation art.)



SOOJIN KIM

DIGITAL ART & MEDIA DESIGN

FAIC 311
 860 465 4328
 kimso@easternct.edu
 kimsoojin.com

ASSISTANT PROFESSOR

Soojin Kim is an interdisciplinary artist whose research focuses on the cultural interaction under colonialism and capitalism in Korea. She incorporates various media and skills that she acquired from her experience as an electrical engineer and graphic designer with traditional art practices. She earned an MFA in studio art from the School of the Museum of Fine Arts at Tufts University. Soojin is represented by the Tao Water Art Gallery and teaches full-time at ECSU.

- Received numerous artist awards and grants such as SMFA Traveling Scholars Award, Montague Traveling grant, and Bupyeong Young Artist.
- Exhibited internationally and participated in renowned artist residencies including MASS Moca, Ox-Bow, PrattMWP, and Bundanon Trust (Australia).
- More than ten years of teaching experience specializing in new media Art & Design.



TOP: Cracked Oreo No.110, Conte Crayon on Paper, 62"x42", 2021.
 BOTTOM LEFT: Memorial No.8, Artist-Designed Wallpaper, 38 Lines In the Middle, and an Oreo Terrarium, 11'X18'X1', 2018.
 BOTTOM RIGHT: 38 Lines in the Middle, 38 unfold Sugar Time (Artist Book), 12X12X12, 2018.

ASSOCIATE PROFESSOR

Tao Chen is an Associate Professor of Digital Art & Media Design at Eastern Connecticut State University, with an MFA in Graphic Design from Louisiana Tech University and a BA from Beijing Institute of Graphic Communication. Being an artist, designer, and educator, he explores the intersections of digital technology, art, and visual communication. His digital mixed media artwork has been exhibited nationally and internationally.

- Eleven grants awarded in the past seven years, including four Connecticut State University faculty research grants.
- Thirty-nine regional, national, and international exhibitions within the past few years.
- Many years of professional experience in digital media and visual communication design, with clients including Comcast, Oceania Cruises, etc.

TAO CHEN

DIGITAL ART & MEDIA DESIGN

FAIC 310
 860 465 5739
 chent@easternct.edu
 taochen.space